

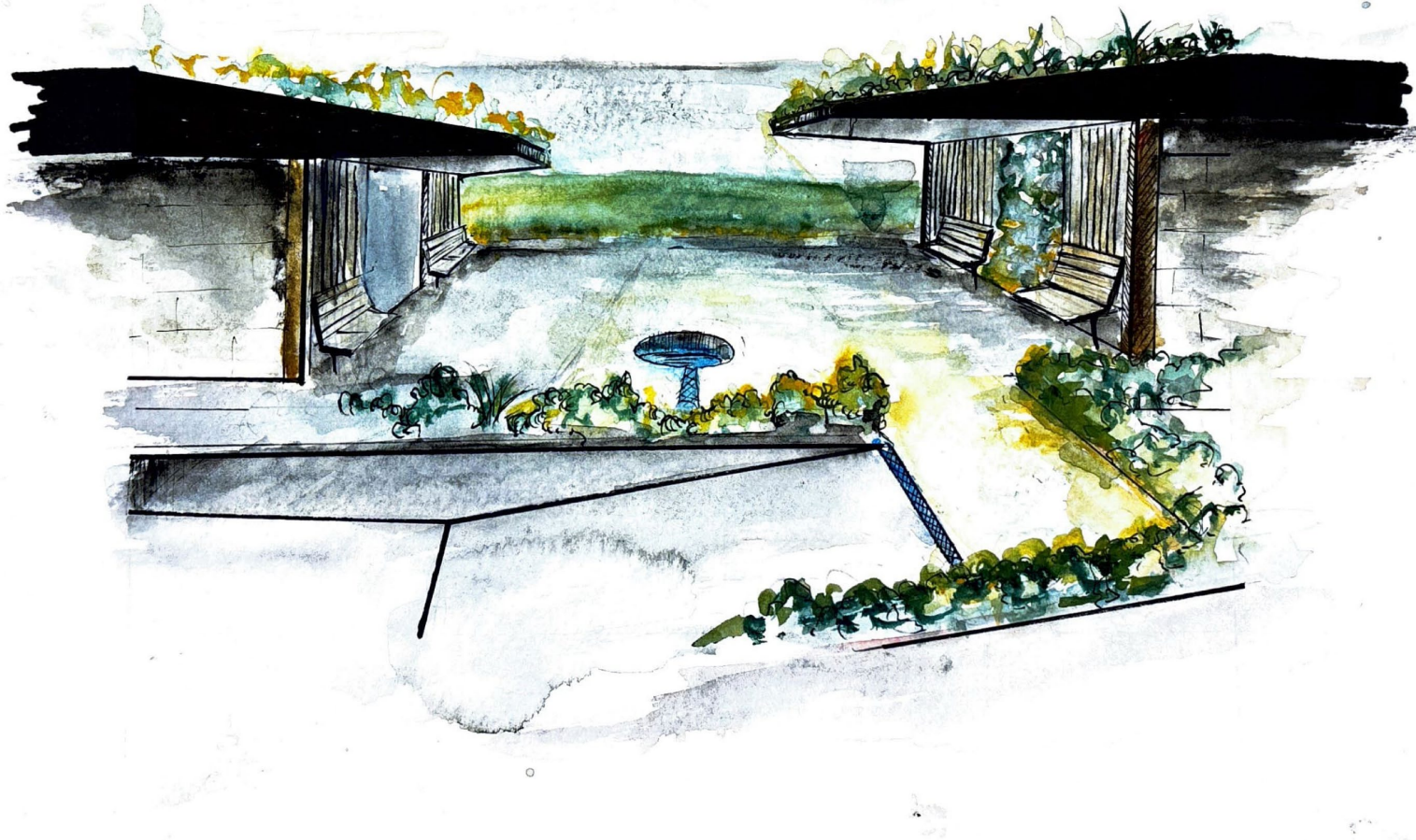
Samuel B. Hewitt

2025 Selected Works

4	GERLINGER FIELD PAVILLION
10	PORTLAND ART STUDIO
16	RCR LAND ART
22	REFUGIO NUEVO
38	SUN MONMUMENT
44	EUGENE WATER CENTER
48	SKETCHES AND WATERCOLORS
54	THE IN BETWEEN



Sam Hewitt is an M.Arch student at the University of Oregon with a background in philosophy and immersive design. He graduated from the University of Texas at Austin, where he specialized in the history of technology and ethics. Sam is a co-author of *Remix in the Age of AI* in the Routledge Companion to Remix Studies and was part of the development team for *The In Between*, a project shortlisted for a Yugo-Bafta Award in 2023. He is using his academic background and growing architectural skills to explore the role of design and emerging technologies on society, with a focus on the philosophical and ethical questions of how design can shape and impact our future.

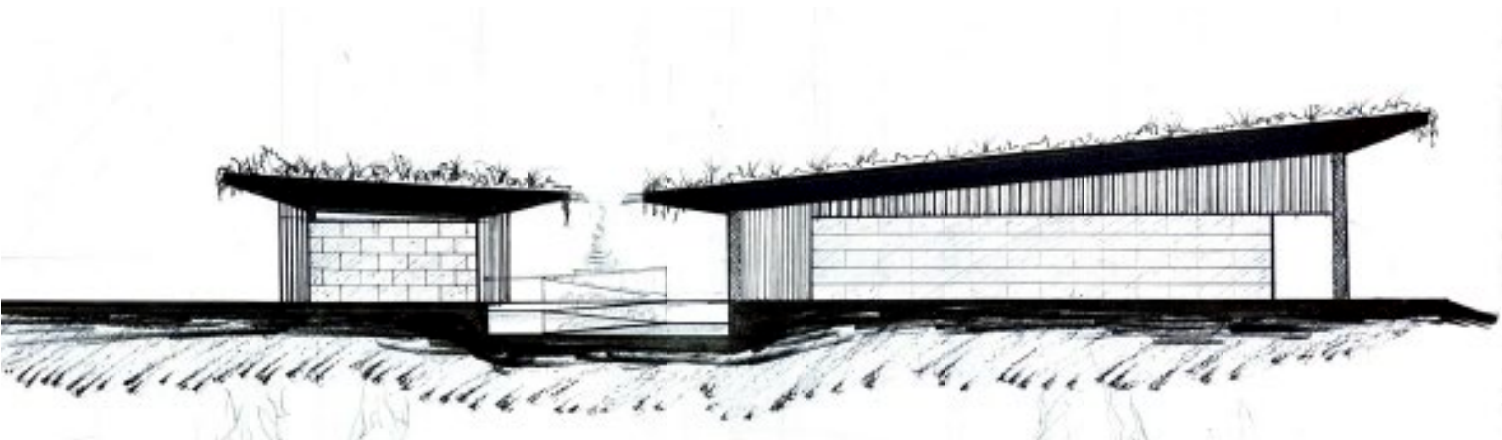


GERLINGER FIELD PAVILLION

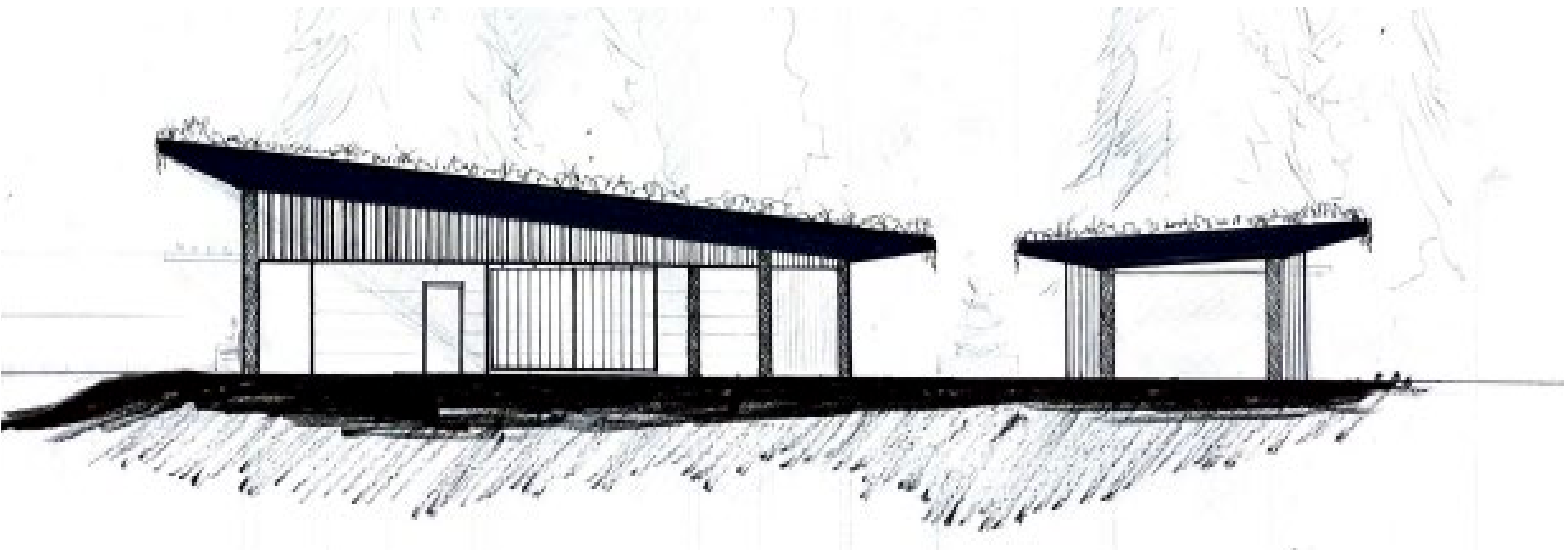
Gerlinger Pavilion sits on Gerlinger Field in the heart of the University of Oregon. With a small outdoor amphitheater, a kitchen, storage areas, benches, and picnic tables, it's a place where students can take a break between classes, share lunch with friends, or host their own events. The green roof, winding paths, and water feature give the pavilion a calm and tucked-away feeling, offering a quick escape into nature and a moment to recenter.



Process Work



East Elevation

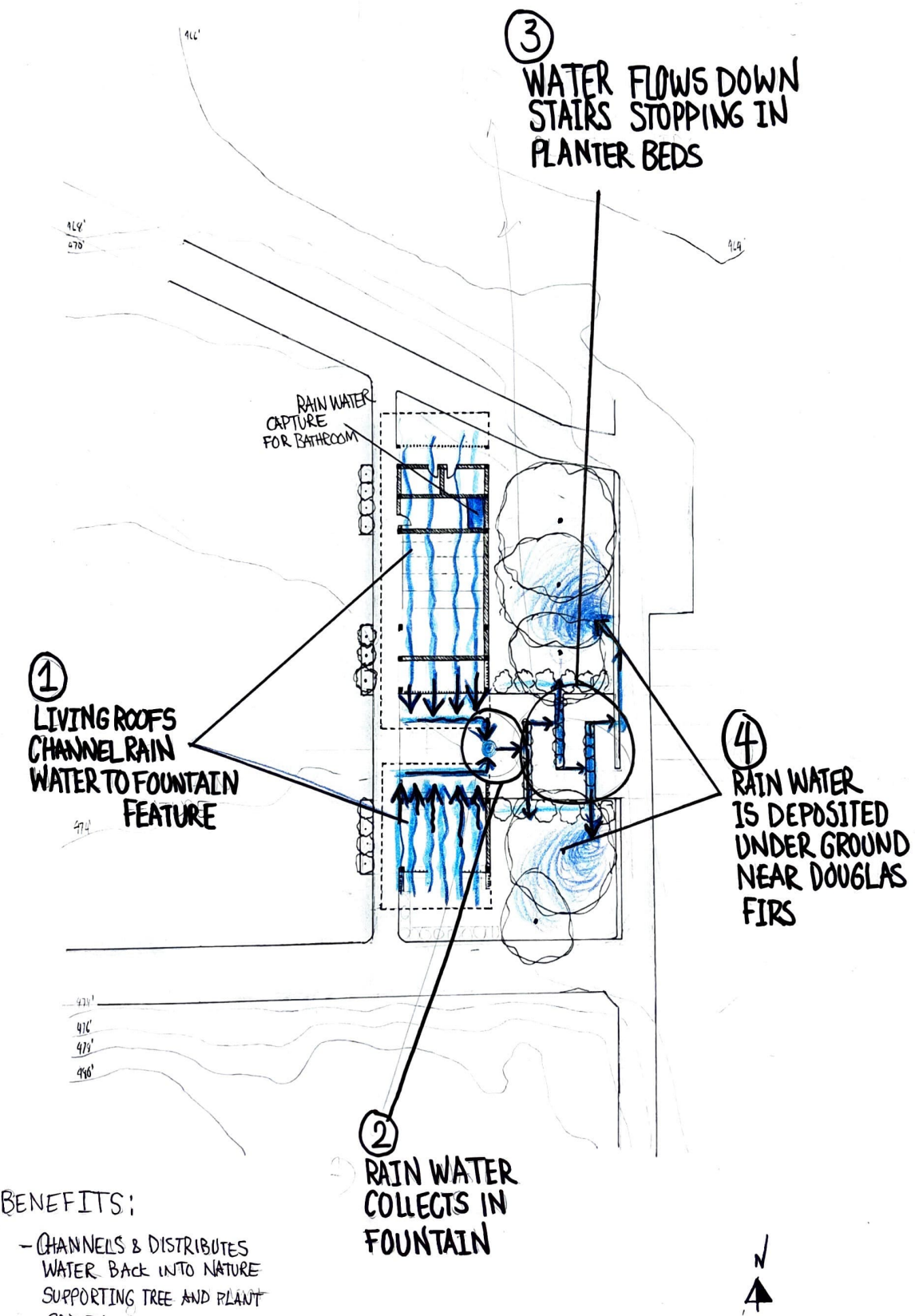


West Elevation



North West Perspective

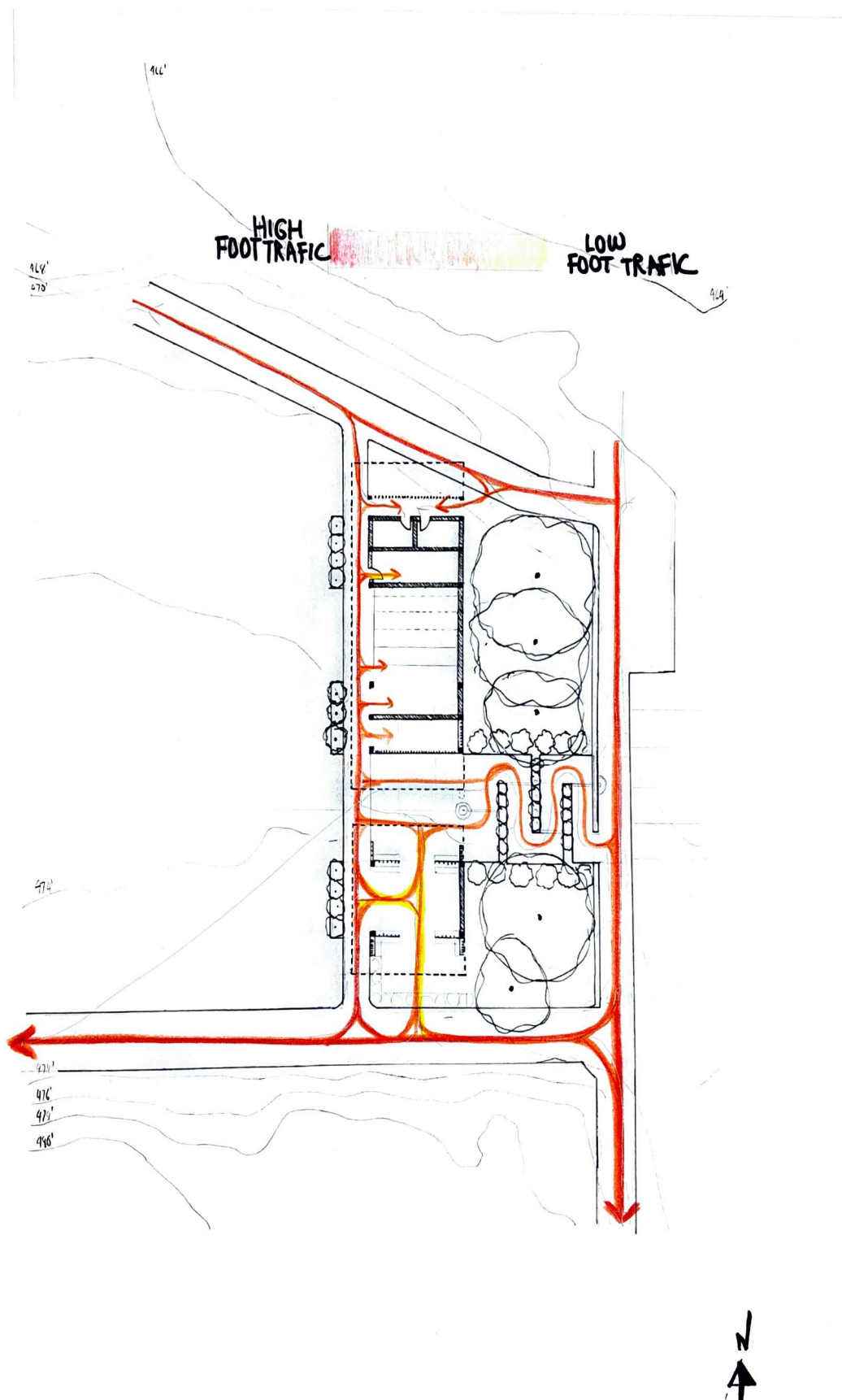
Water Flow Diagram

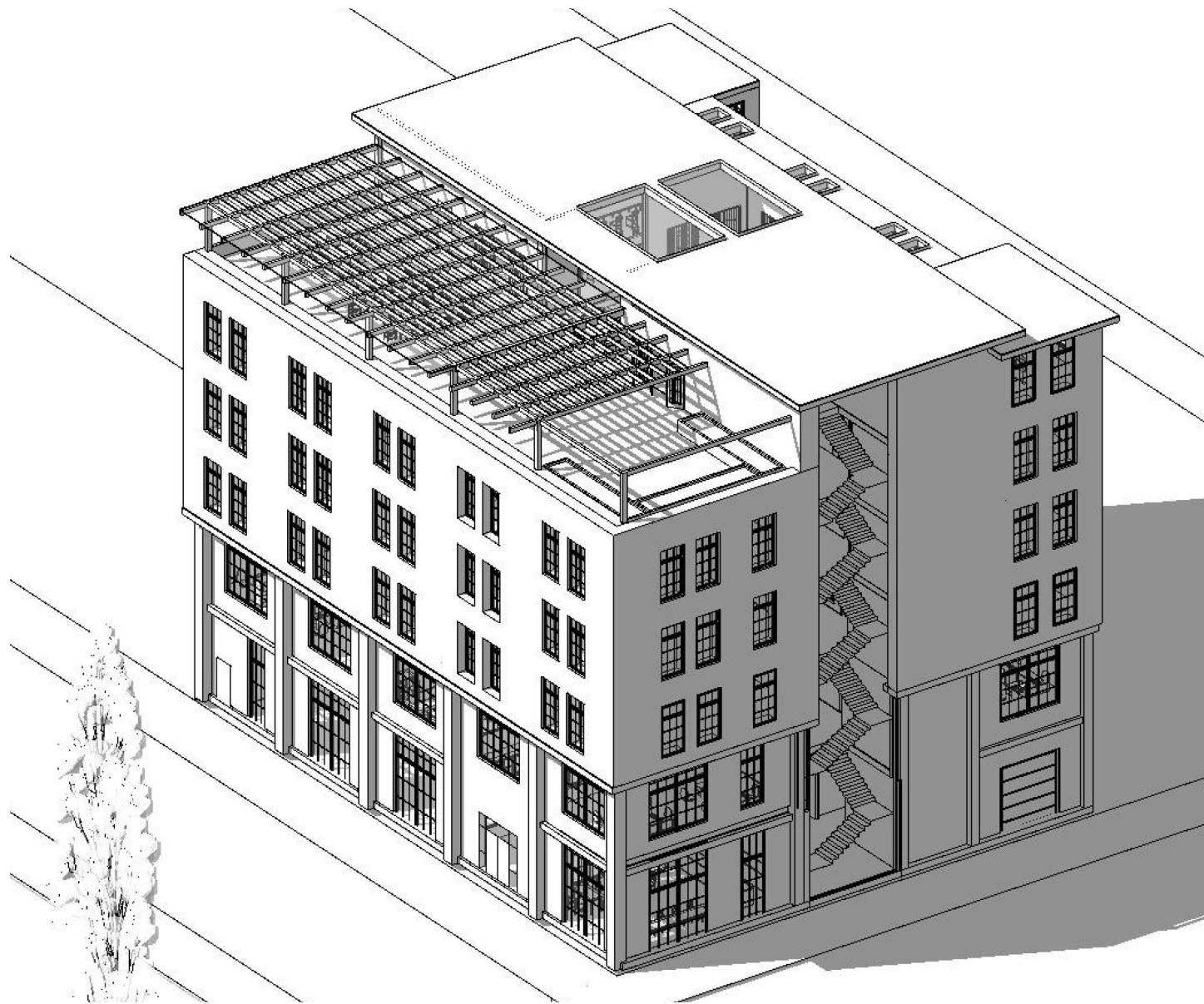


BENEFITS:

- CHANNELS & DISTRIBUTES WATER BACK INTO NATURE SUPPORTING TREE AND PLANT GROWTH -
- RUNNING WATER CREATES WHITE NOISE, HELPING PEOPLE CALM, REJUVINATE & SLOW DOWN -

Flows of People





PORTLAND ART STUDIO

The Italian Institute of Art is an art residency for visiting artists on the corner of 8th St and Couch St in Portland, OR. The residency provides small, medium, and large studios with various moments for interaction between the artists and the public.



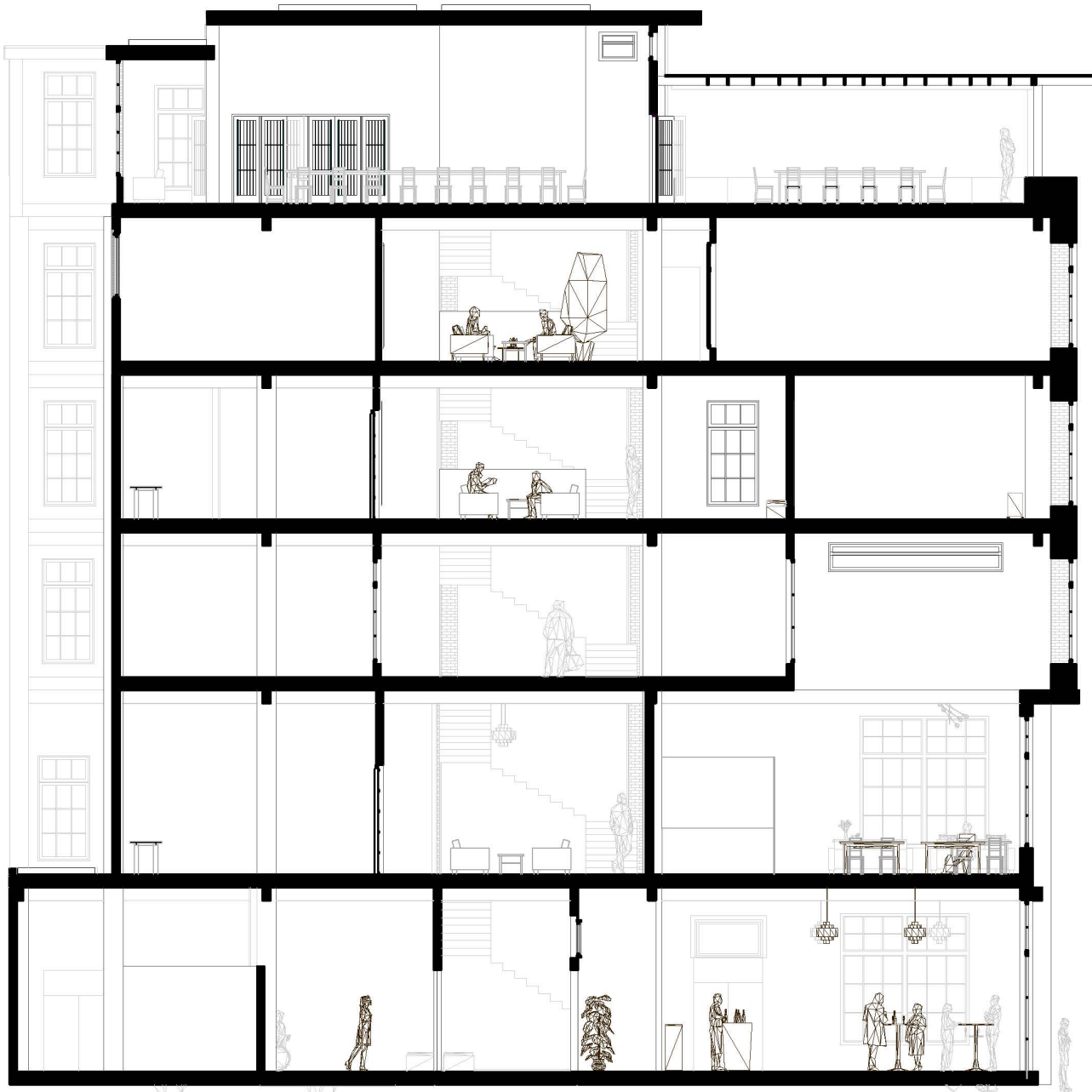
Lobby Render



Studio Floor Common Space Render



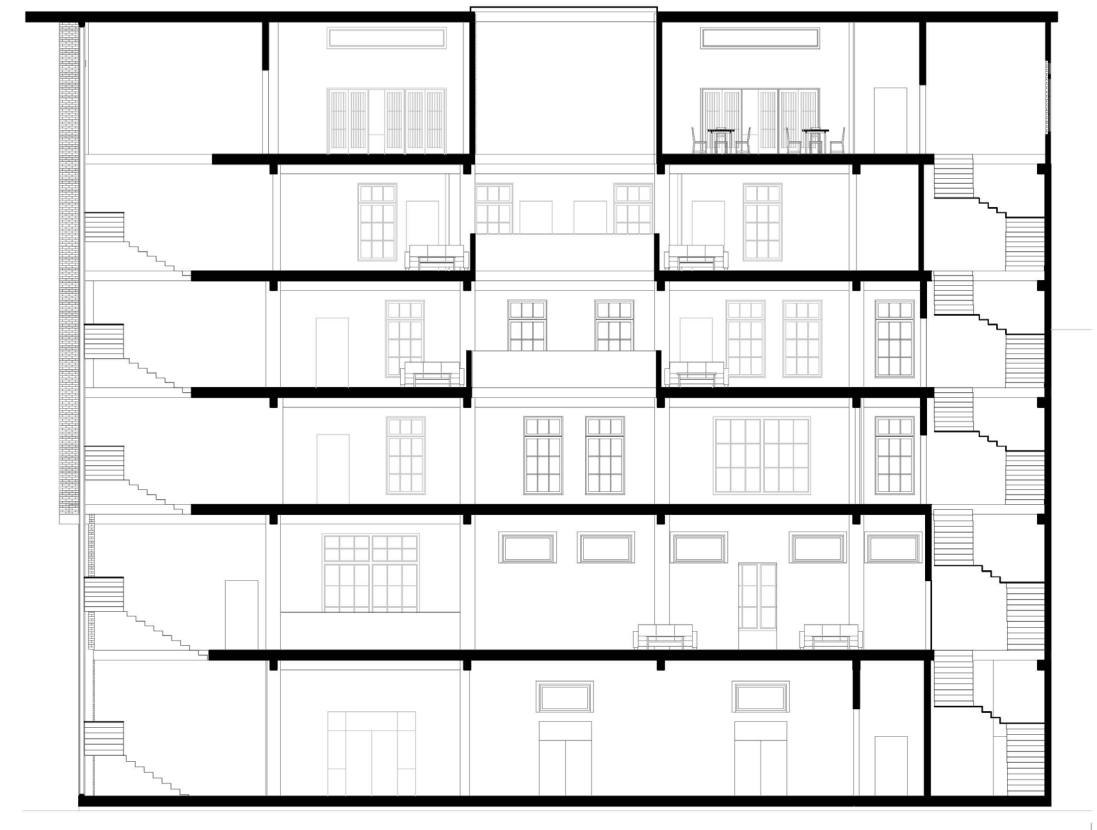
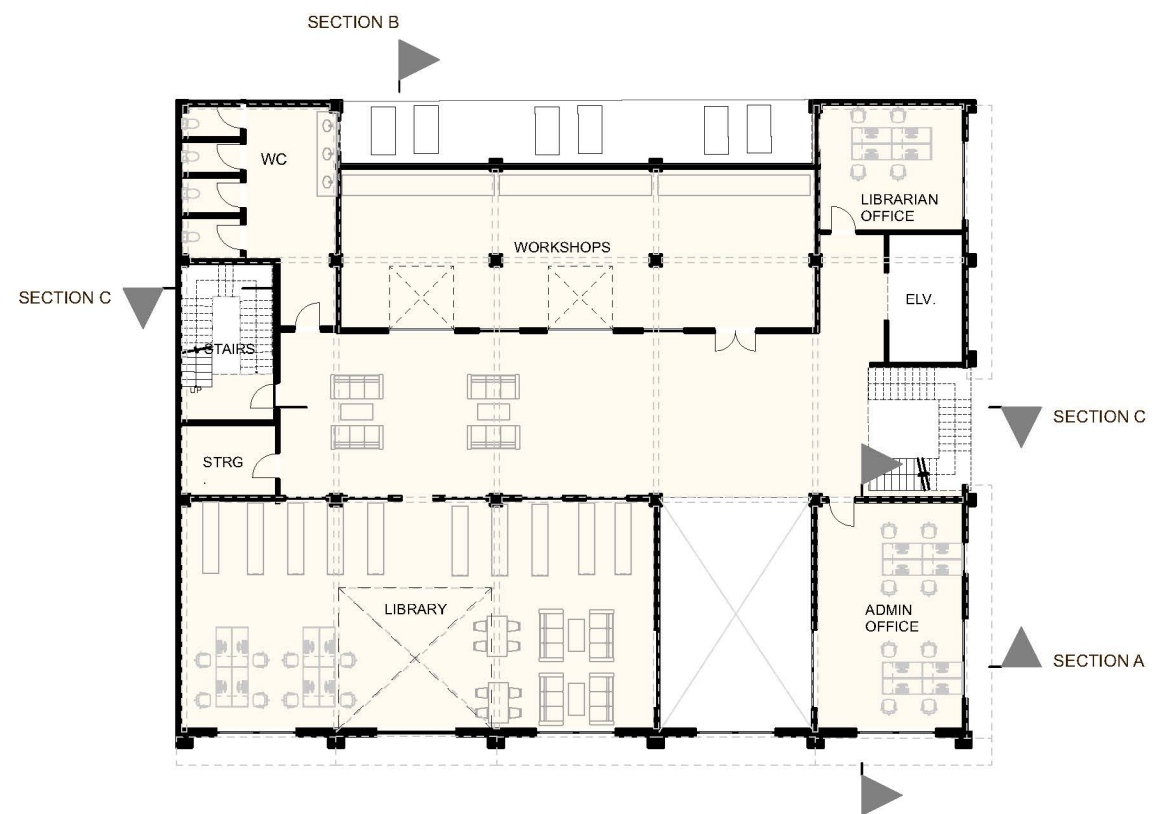
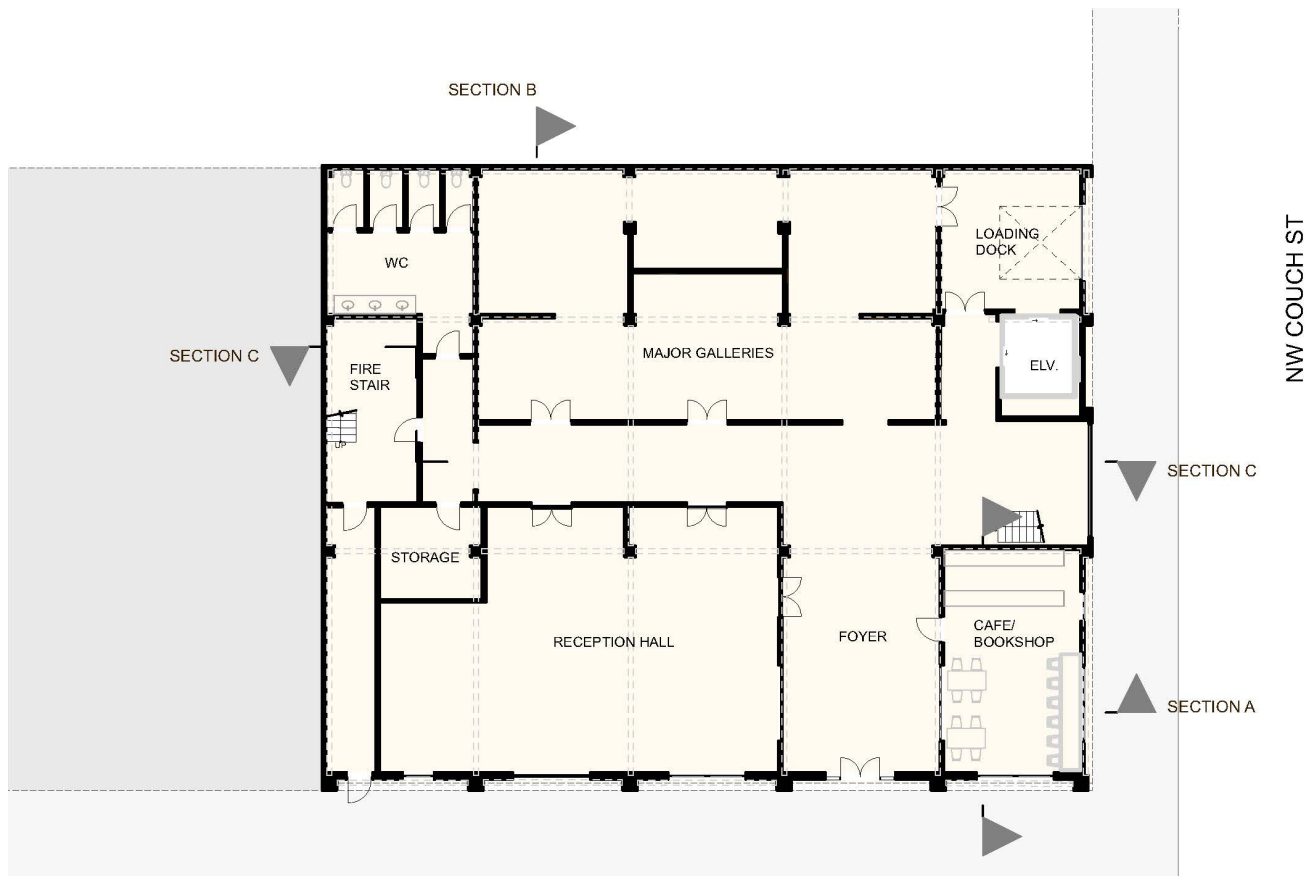
Galleries



South Section

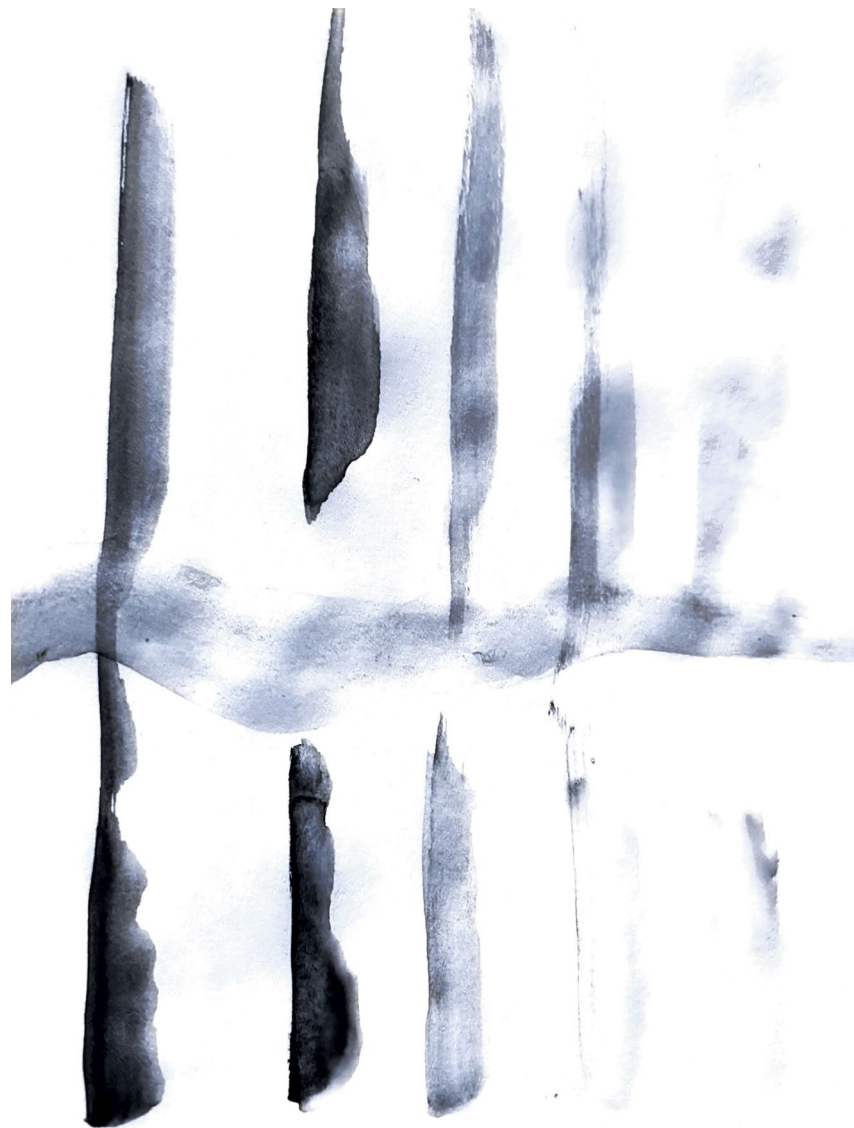


Reception Hall



First and Second Floor Plan

Typical Studio Floor and East Section



PATHS OF EROSION

RCR LAND ART

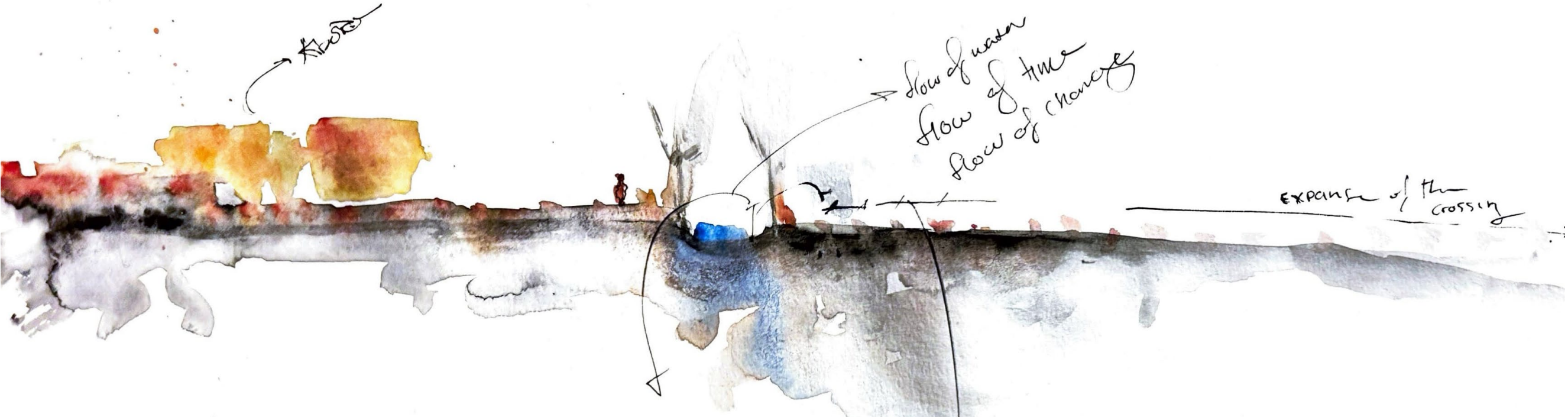
This land art installation begins with stones from a single creek in Girona Spain, set in a straight line that runs across the flowing water and continues into the surrounding field. It's an act of order: lining up what nature has scattered. Over time, the creek and the weather will work on the stones, wearing each down in its own way and at its own pace. The line becomes a kind of timeline, showing how water and weather change things unevenly, and how even our most careful arrangements are slowly reshaped by the world around them.

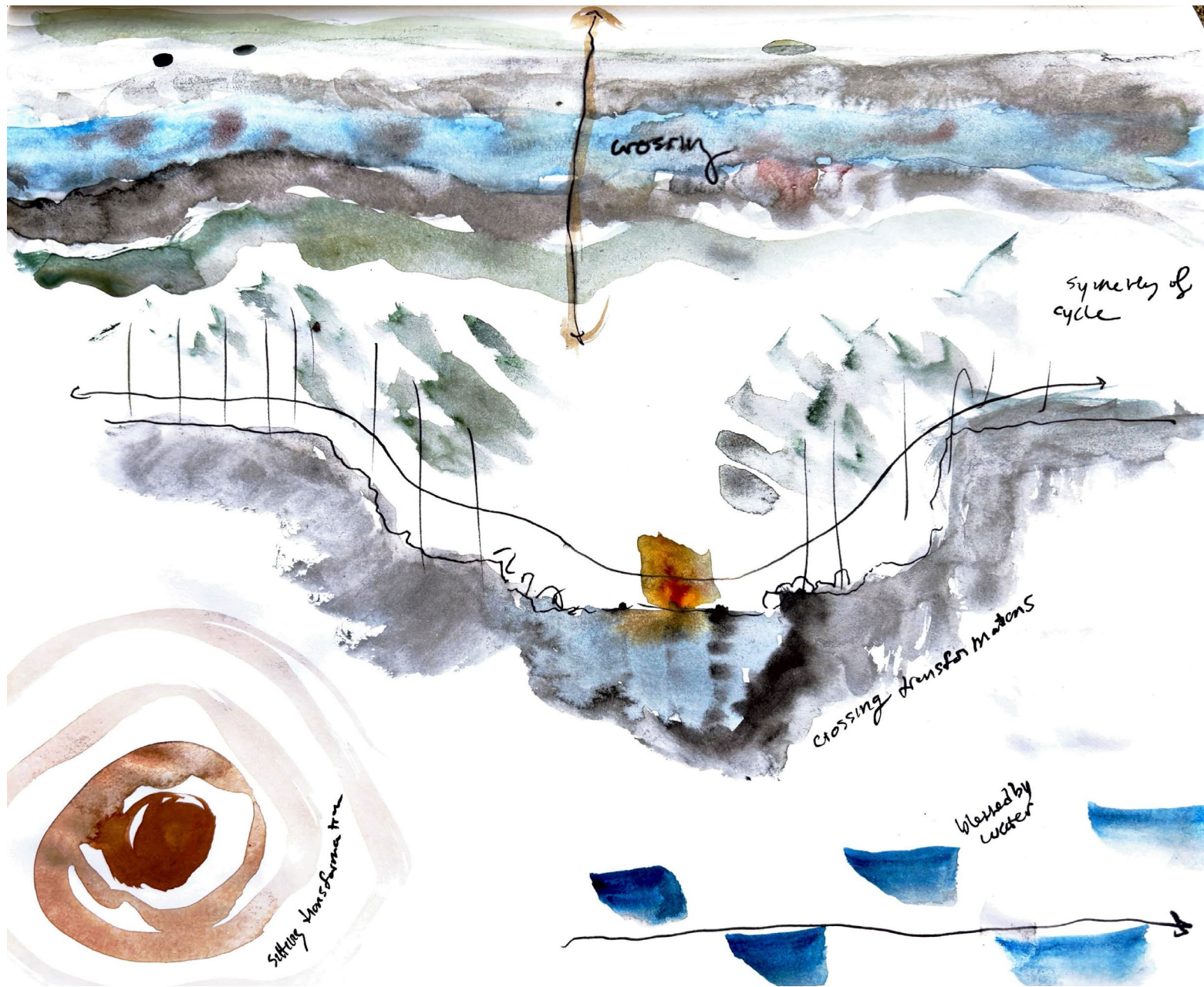


Site Plan



Site Section





Experiential Diagram



Crossing at Dusk



REFUGIO NUEVO

Refugio Nuevo is a proposed public housing project with a daycare and street level commercial space in Marina del Pratt Vermell. The goal is to provide both market rate and social housing while offering refuge from summer heat and poor air quality. The project is rooted in extensive on-site research into Barcelona's urban heat island effect, existing nodes of refuge, and projected climate change impacts to make sure the design directly responds to some of the city's most pressing challenges.

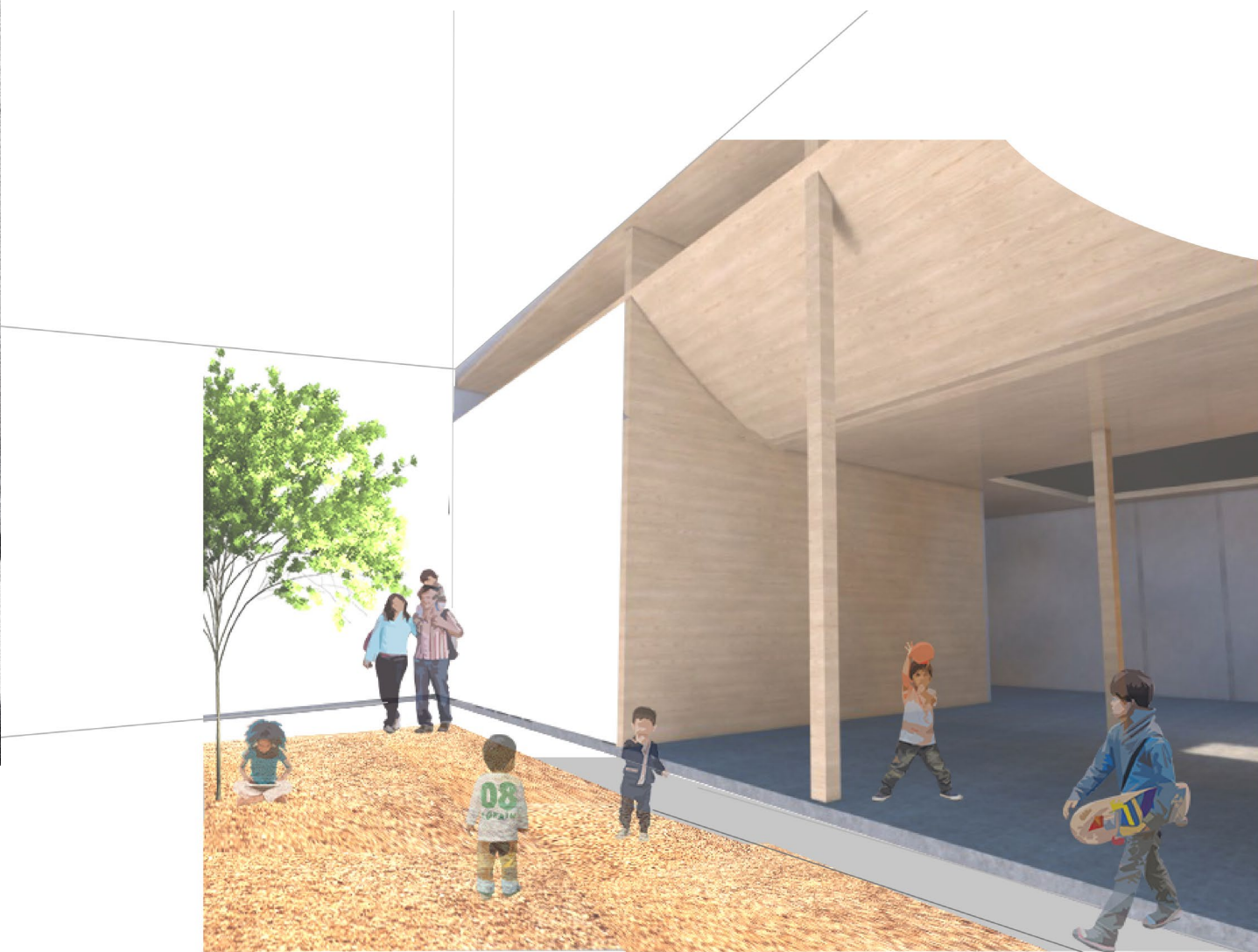




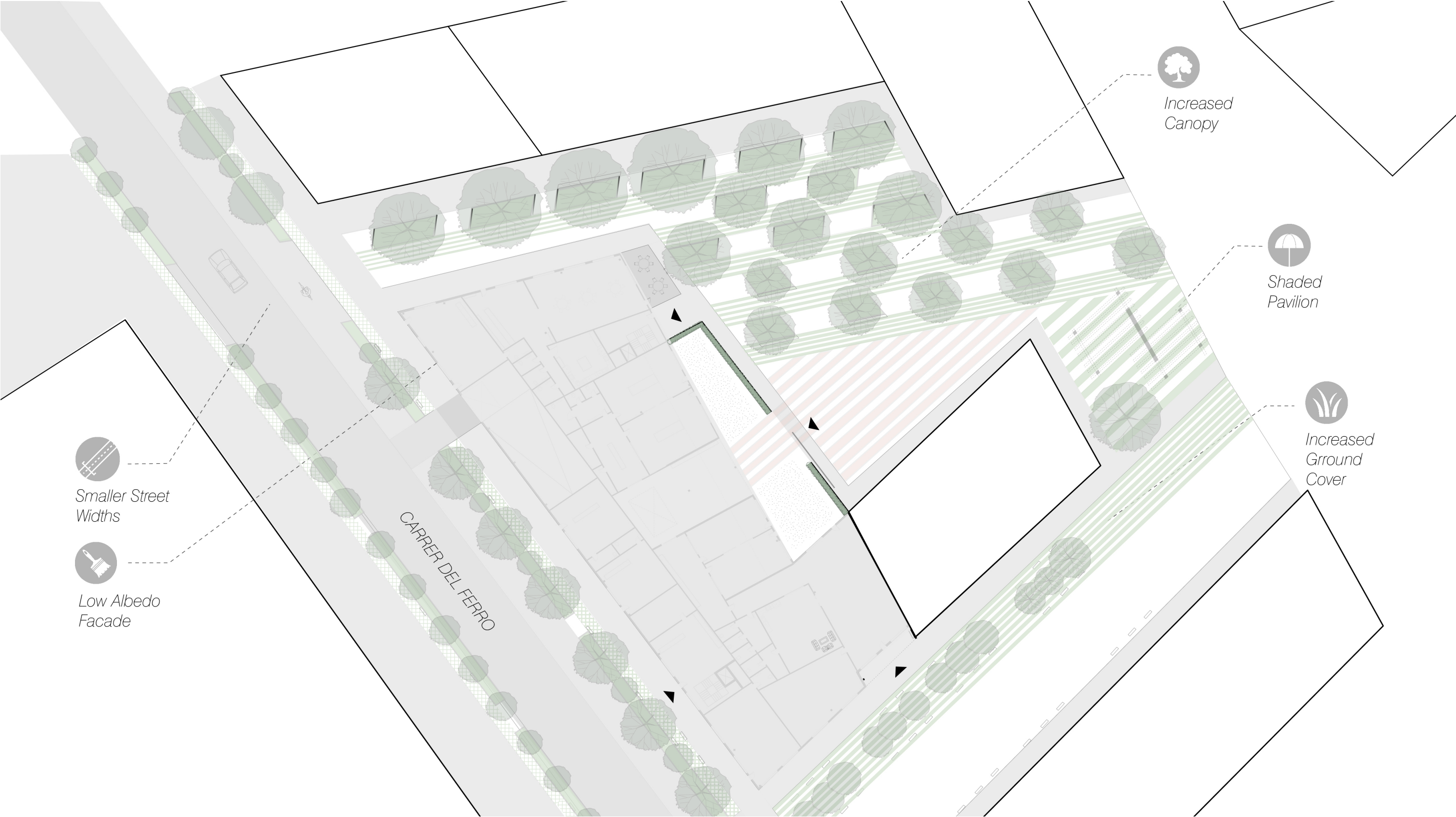
Diagram of Refuges and Green Cooridoors



Neighborhood Map

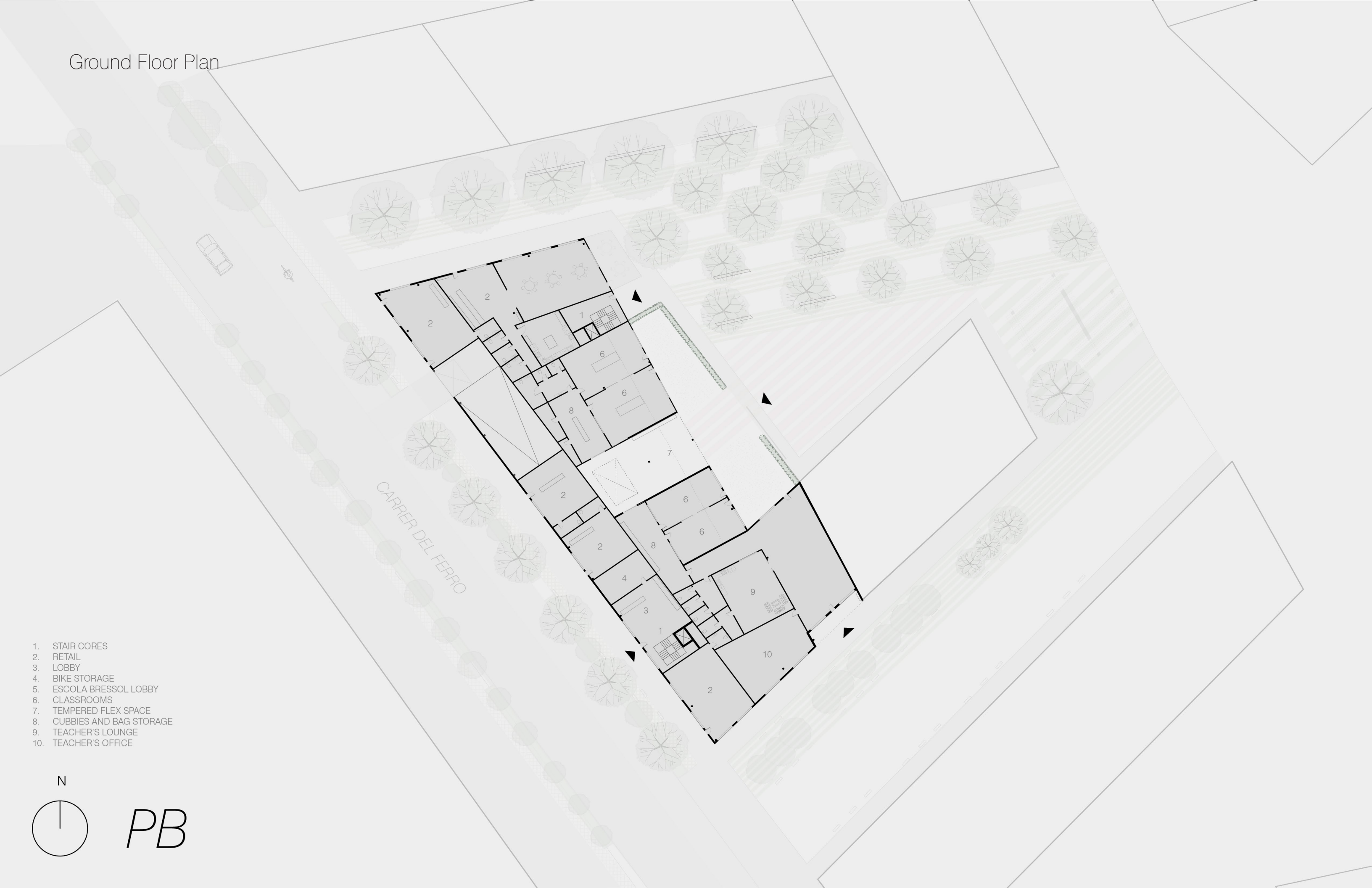


Site Plan



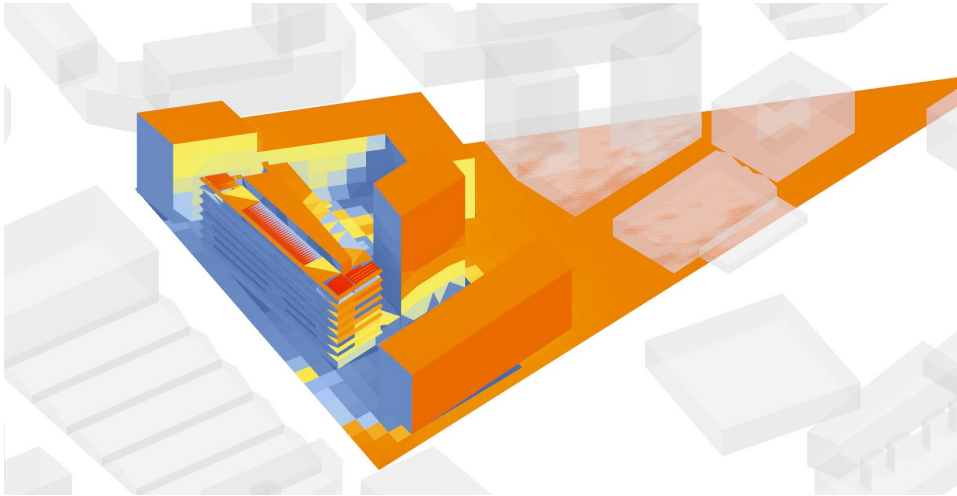
Ground Floor Plan

- 1. STAIR CORES
- 2. RETAIL
- 3. LOBBY
- 4. BIKE STORAGE
- 5. ESCOLA BRESSOL LOBBY
- 6. CLASSROOMS
- 7. TEMPERED FLEX SPACE
- 8. CUBBIES AND BAG STORAGE
- 9. TEACHER'S LOUNGE
- 10. TEACHER'S OFFICE

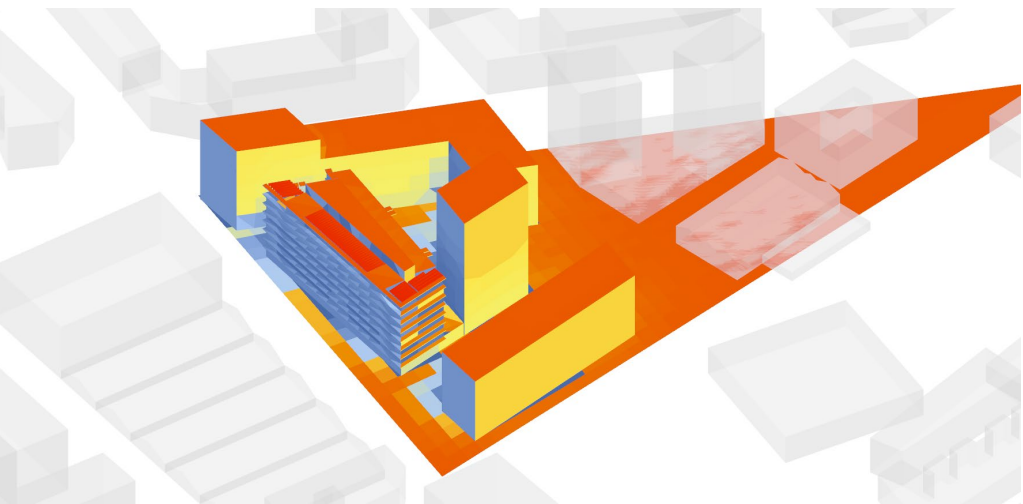


August Radiance Analysis

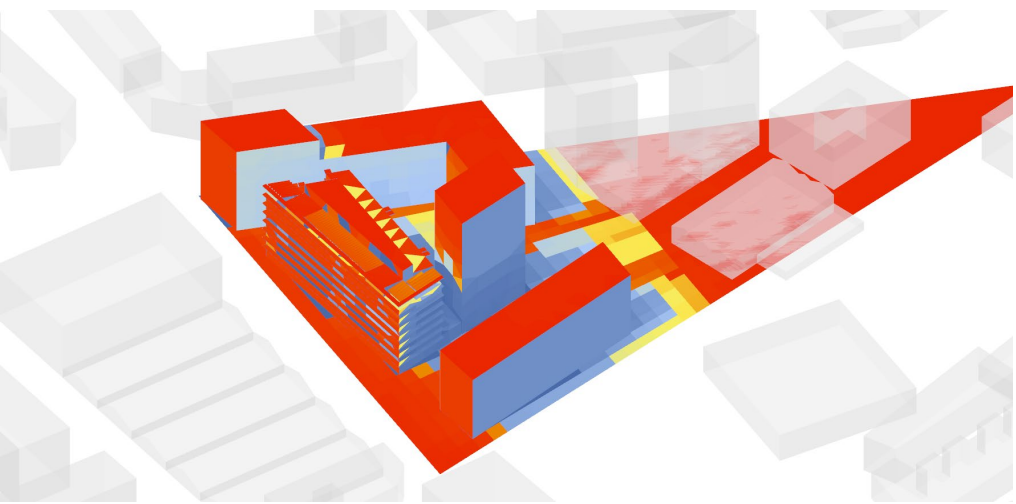
9 AM



12 PM



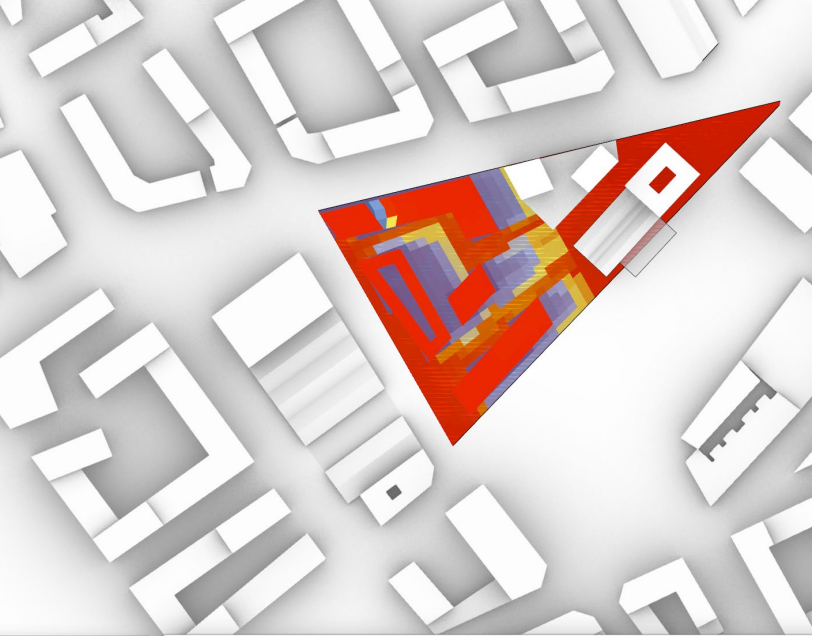
3 PM



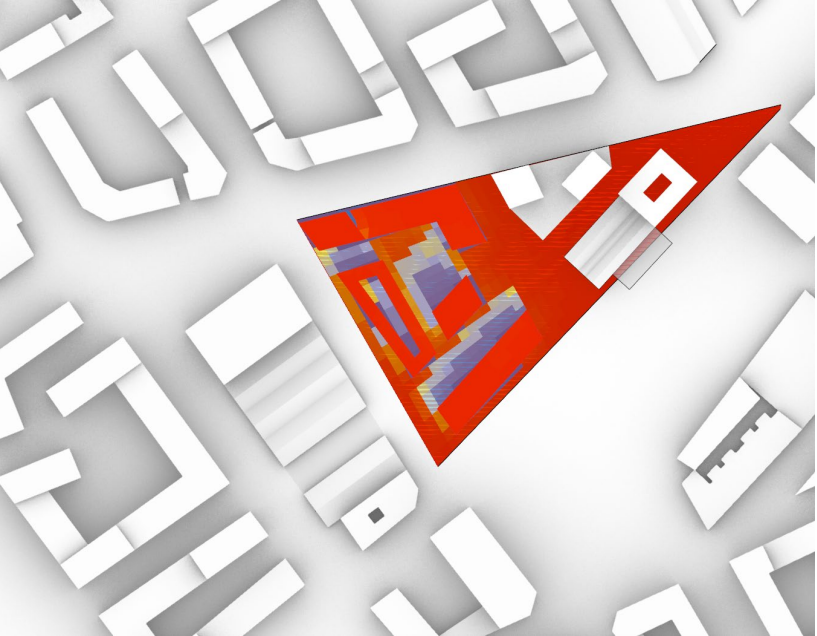
9 AM



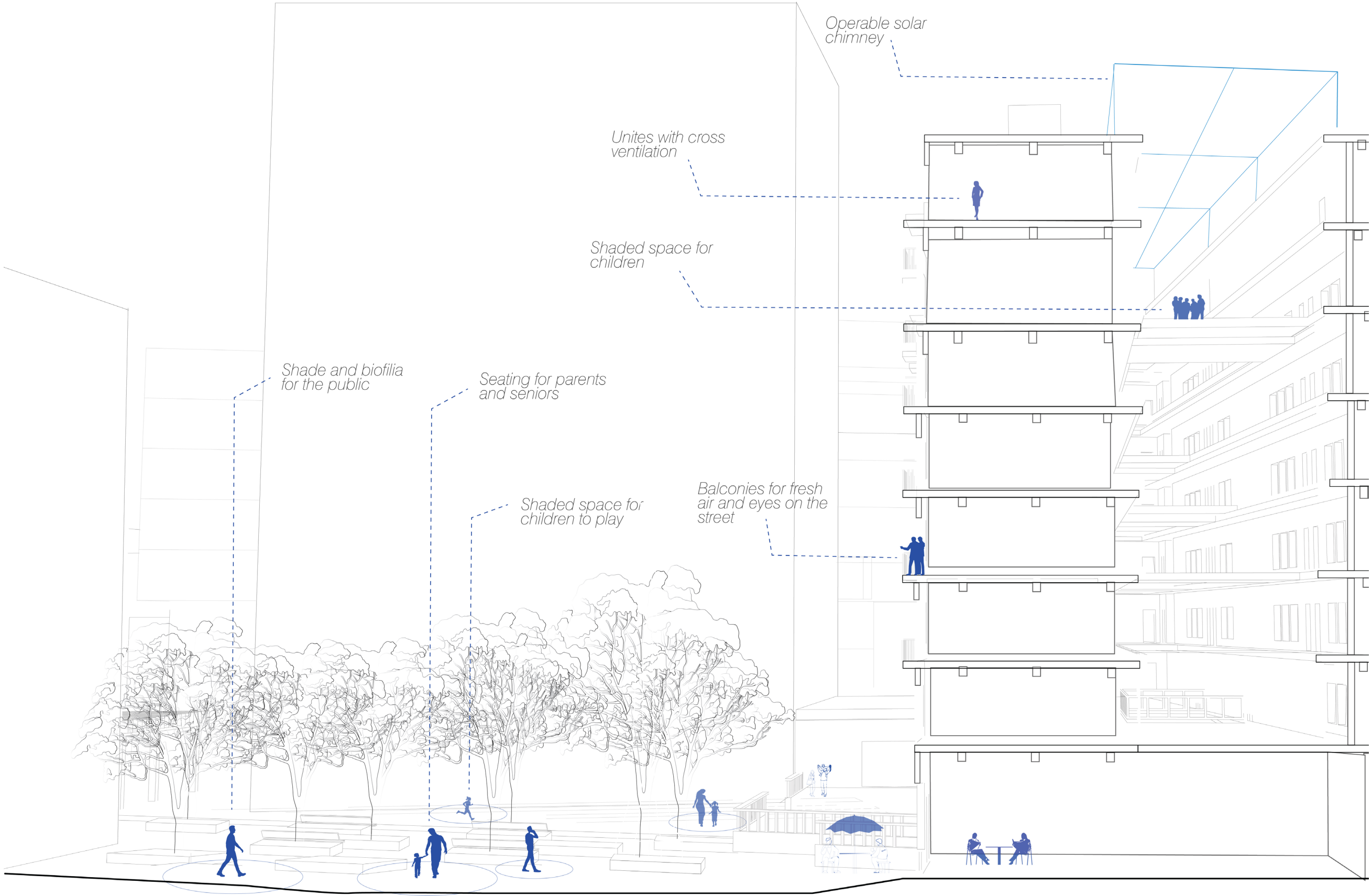
12 PM

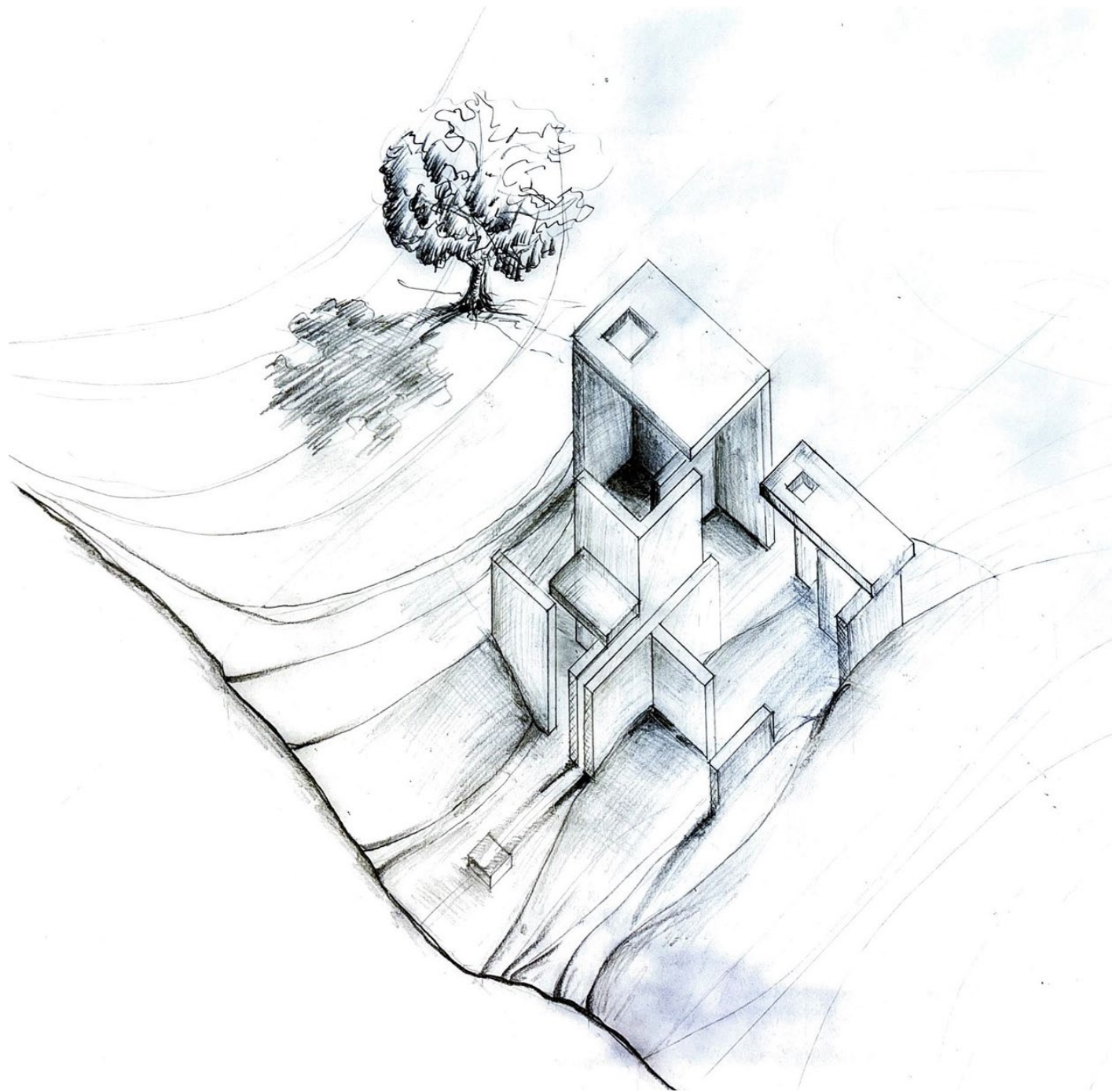


3 PM



Secction Through Interior Courtyard

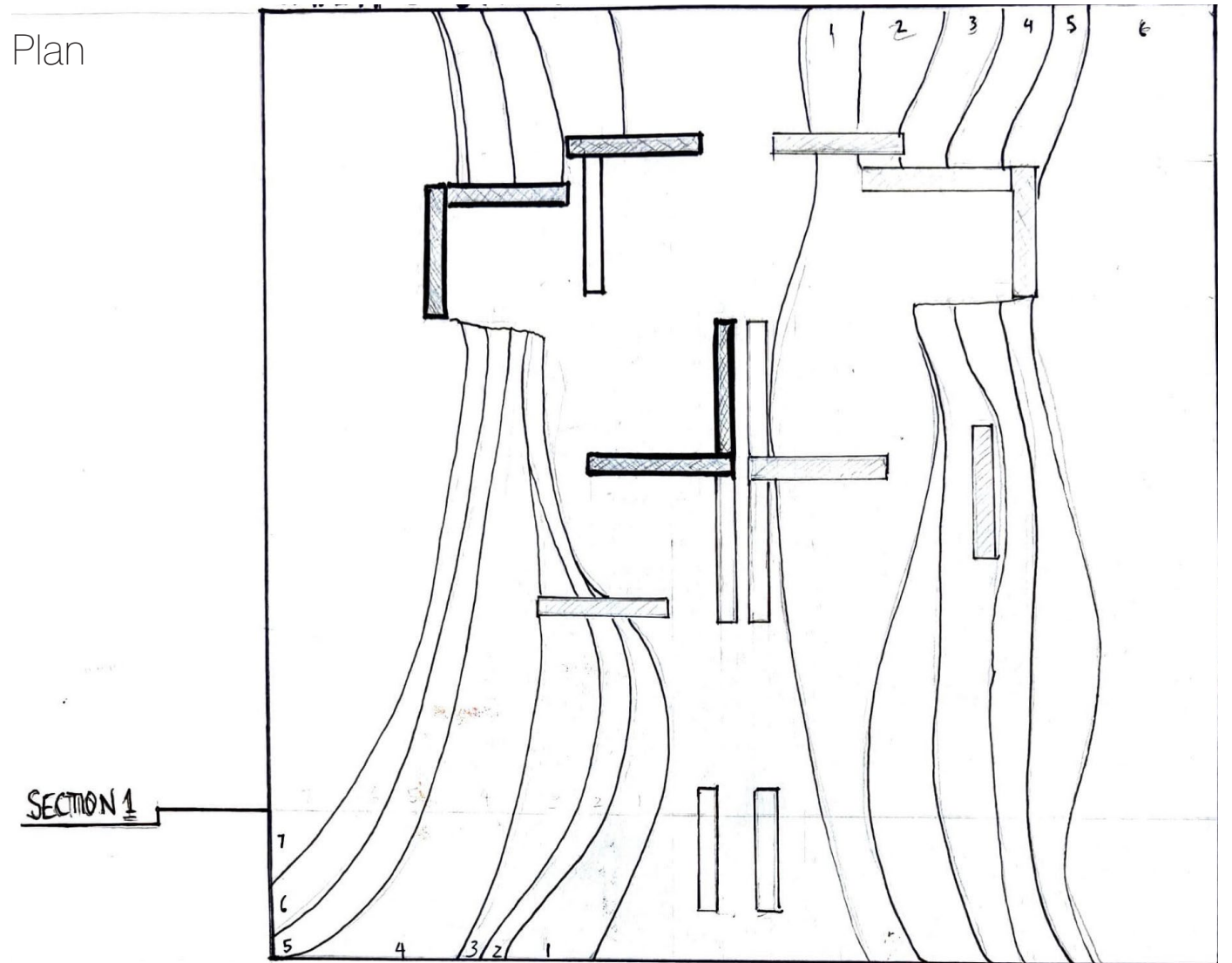




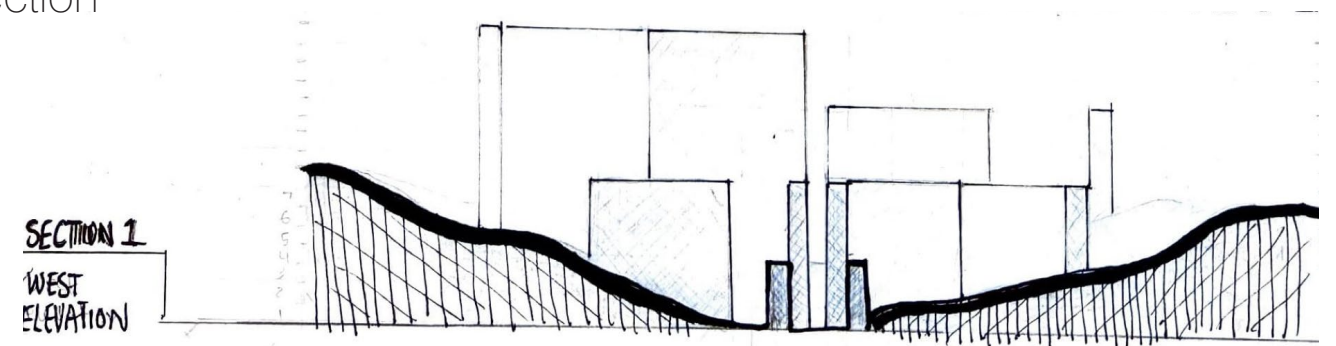
SUN MONUMENT

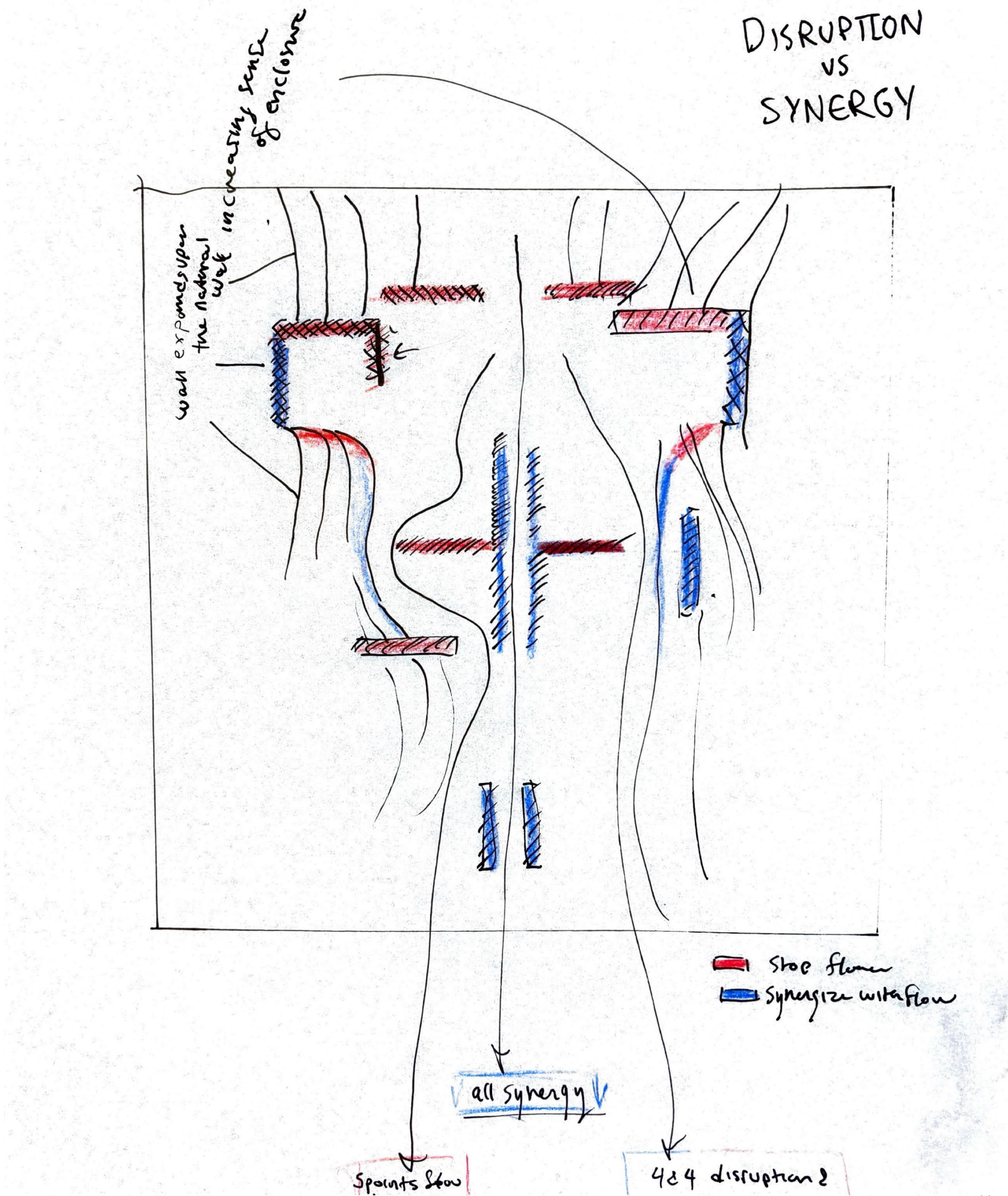
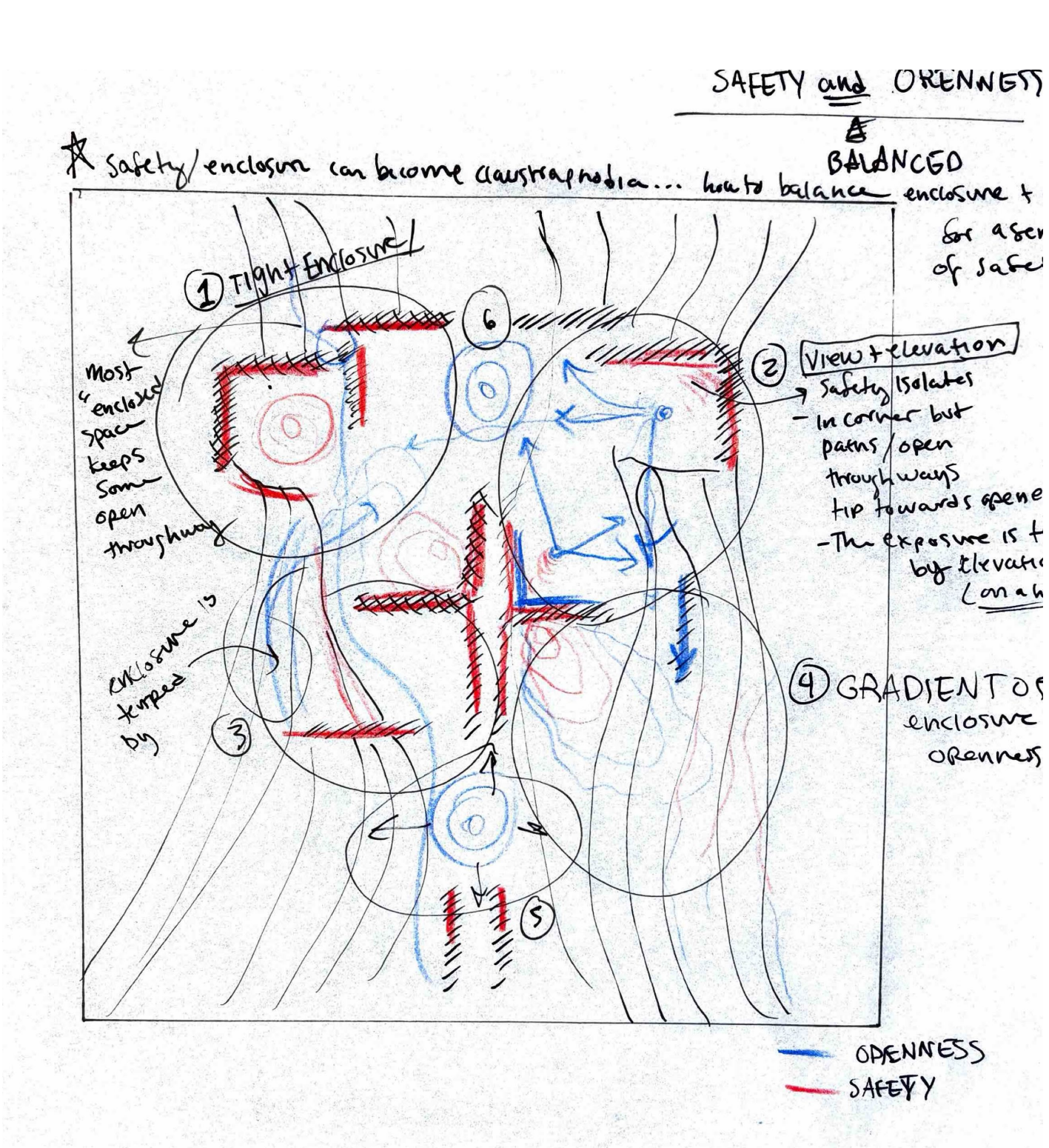
The Sun Monument is a landform-based installation shaped by the site's topography and built through surface plains and cuts into the ground. Its design works in oppositions: stillness and speed, enclosure and openness, shadow and light, disruption and synergy. Aligned with the sun's path, the monument is oriented so that on the solstice, sunlight passes through a precise opening to celebrate the changing seasons.

Plan

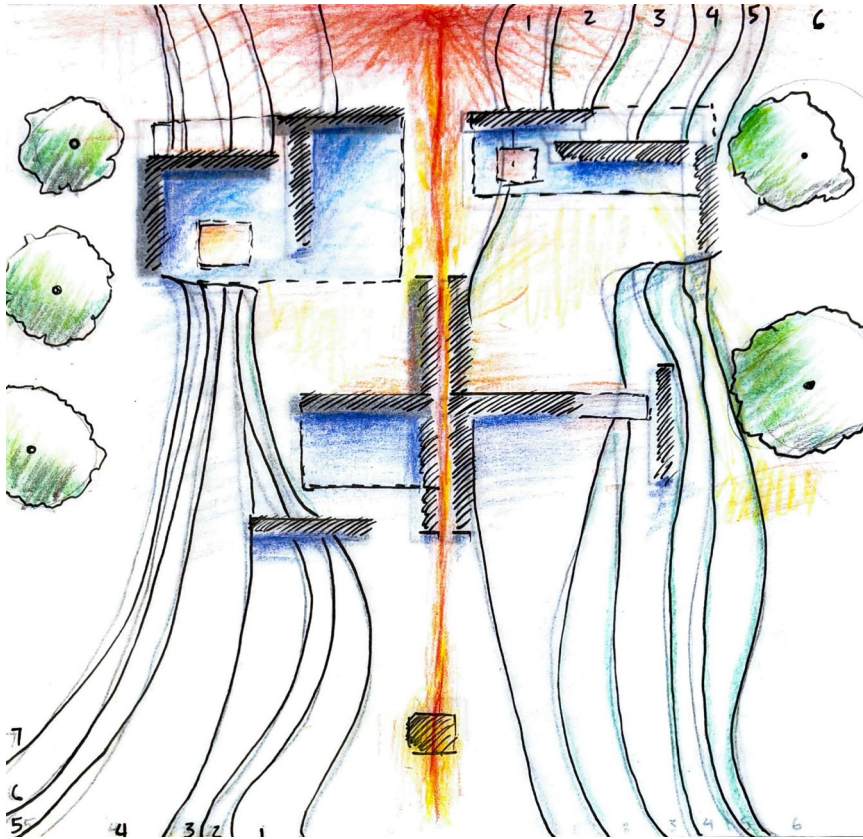
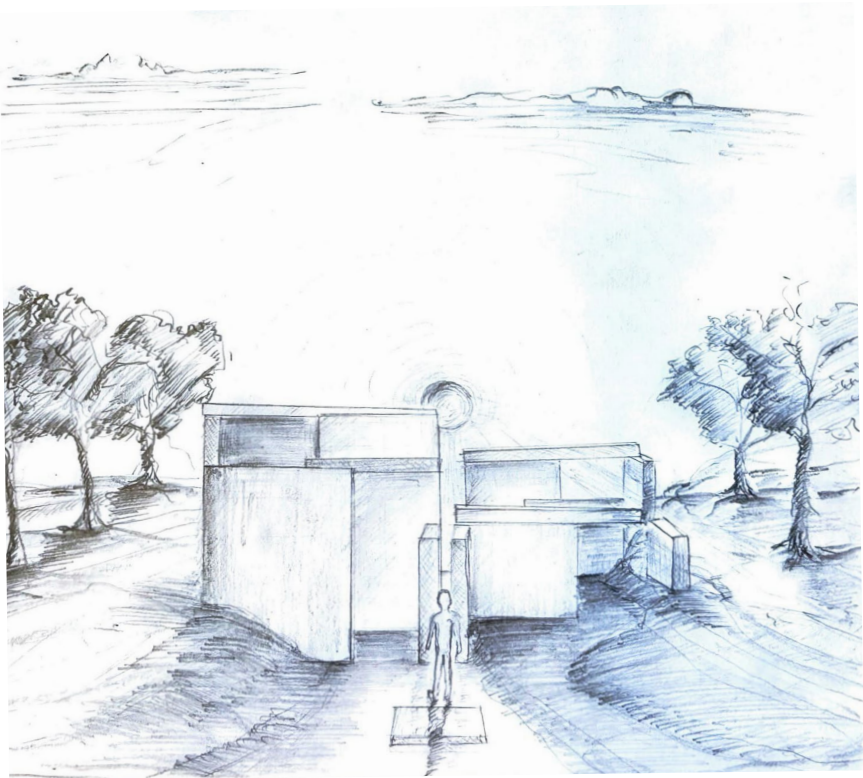
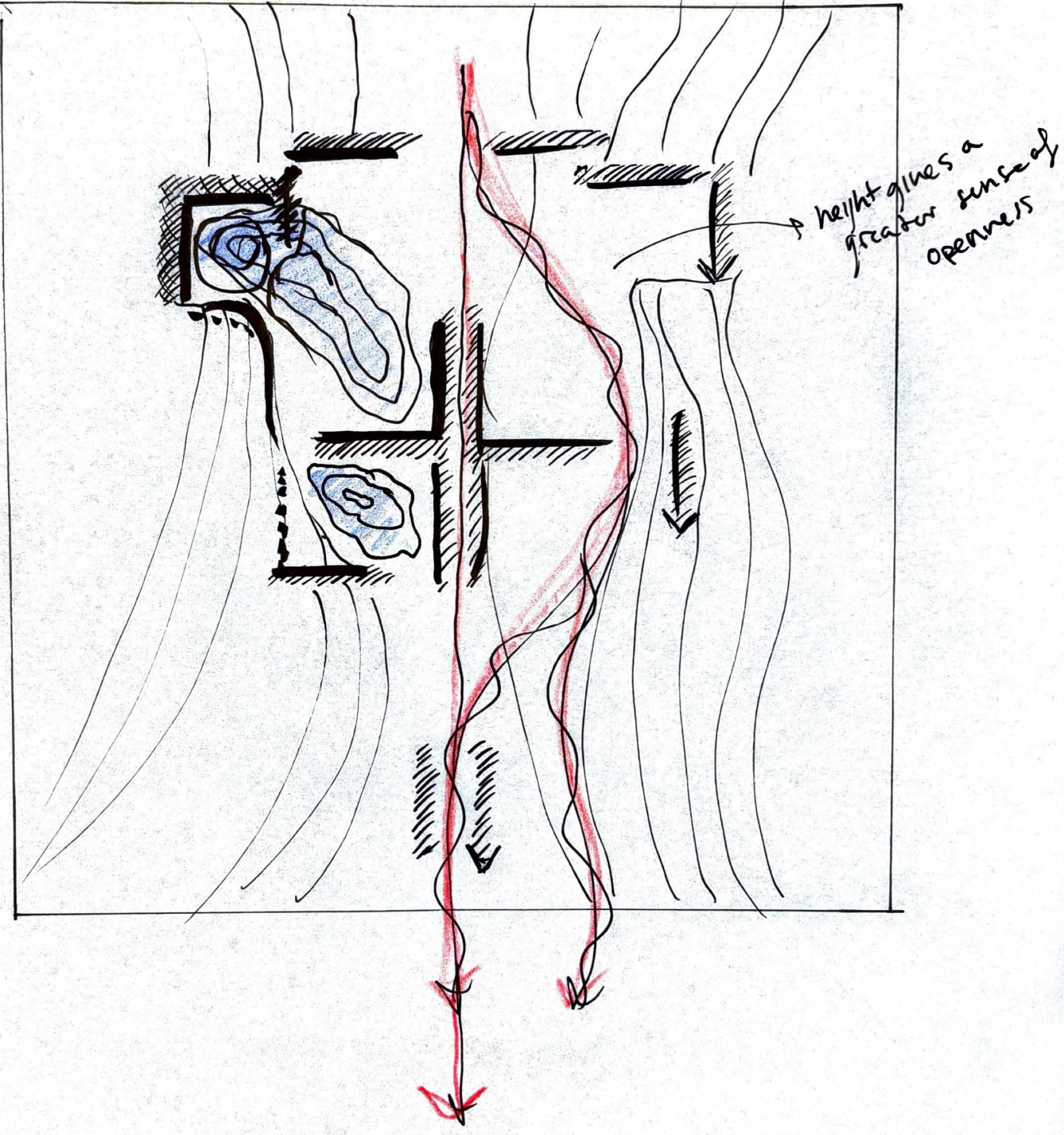


Section





STILLNESS vs. SPEED
Safety & openness



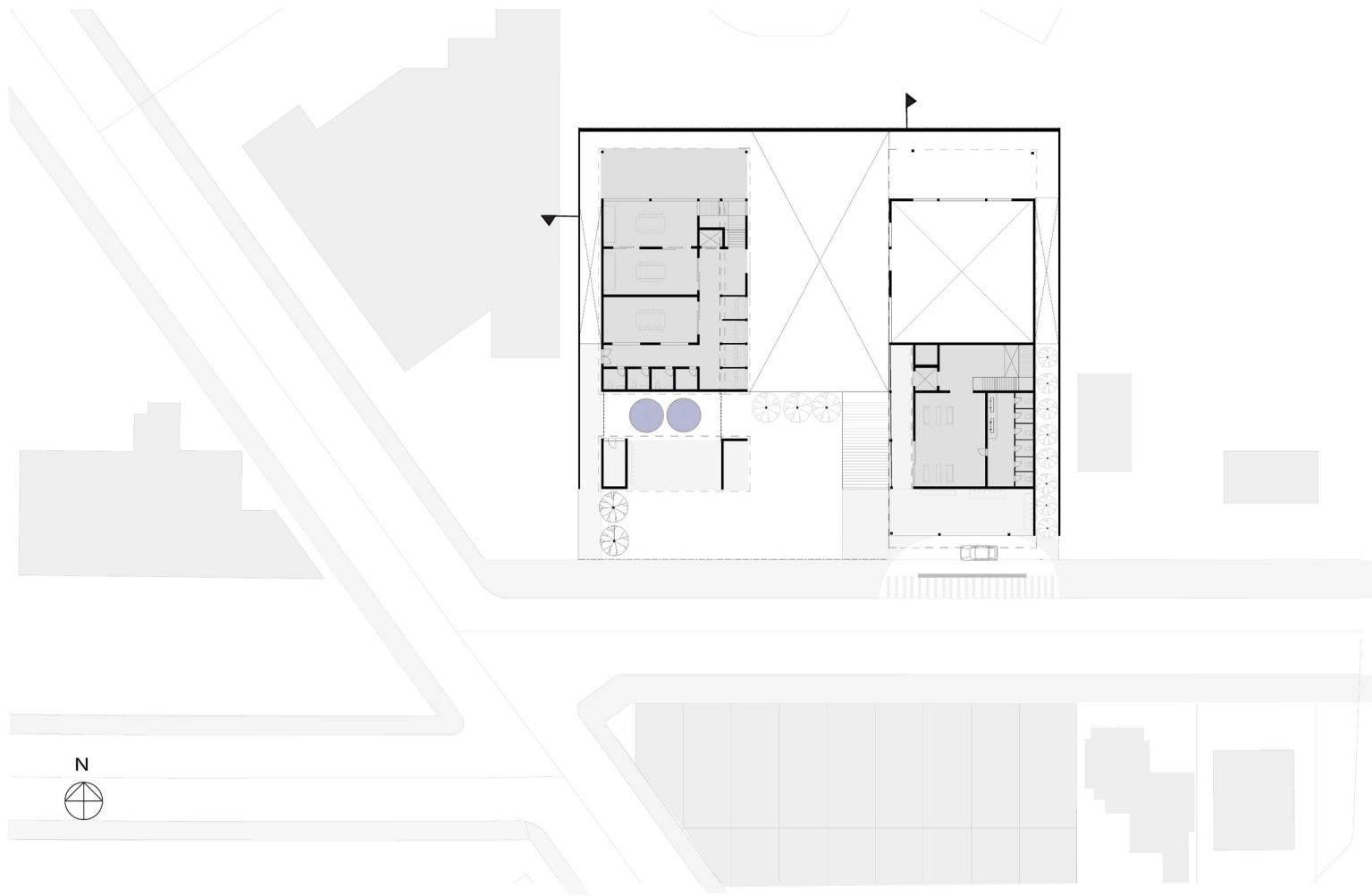
Renders of Solstice



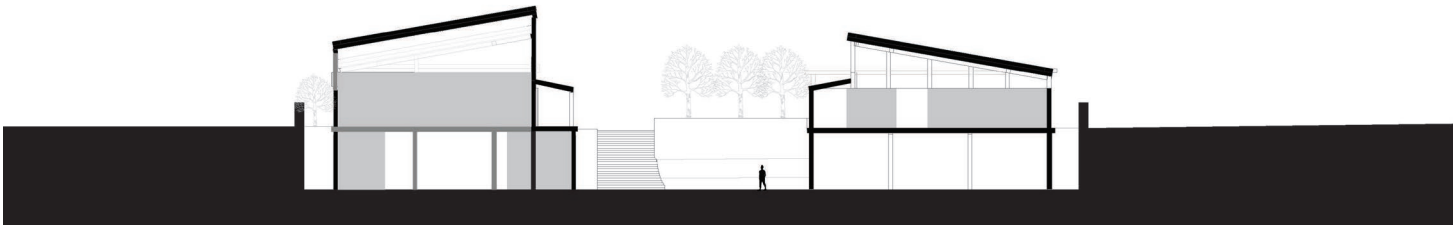
EUGENE WATER CENTER

Territory Map of Eugene

The Eugene Water Center is a civic hub that supplies water to the public, is a gathering place for the community, and a workspace for non-profits focused on water conservation. The facility includes public water filling stations, a lobby and conference rooms, an auditorium, offices, and dedicated spaces for water management and filtration.



First Floor Plan

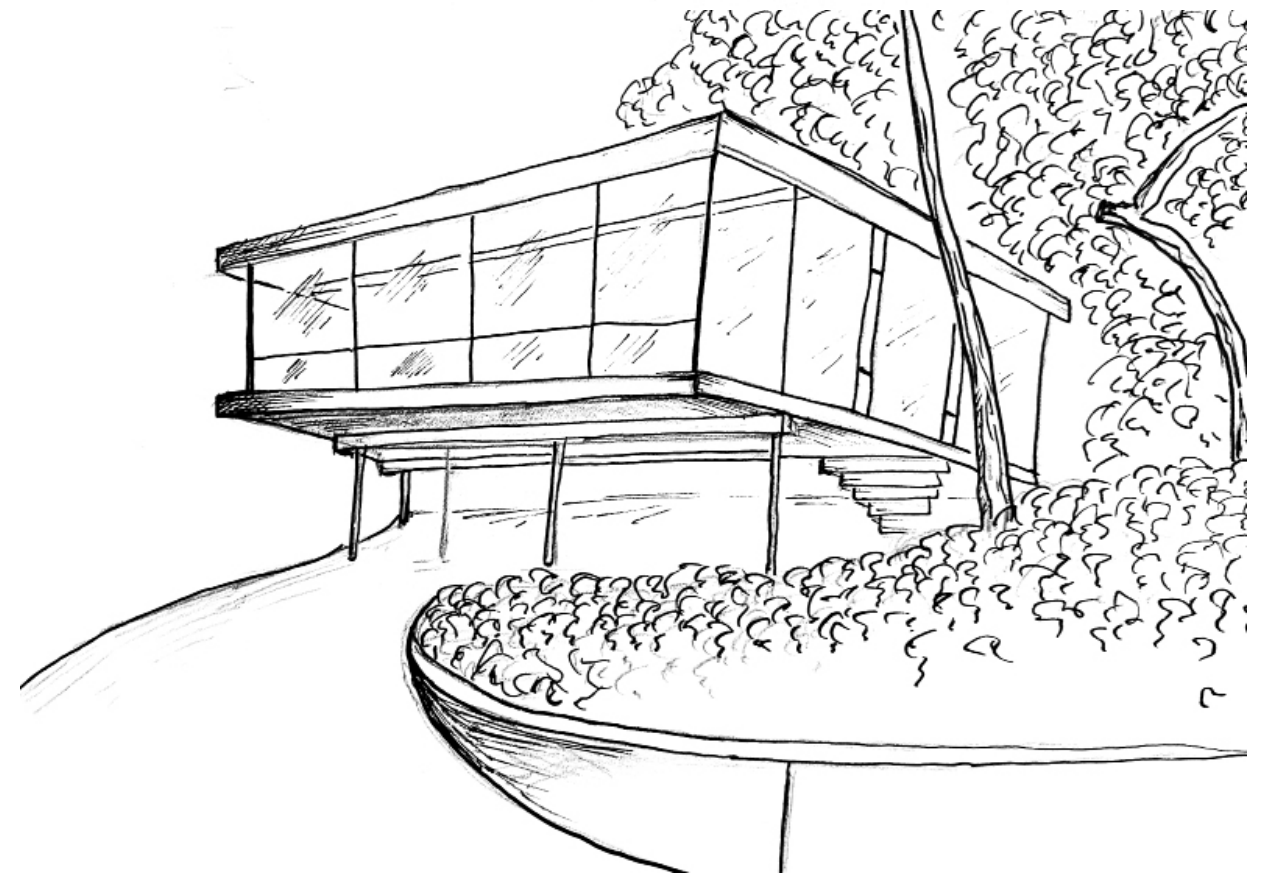
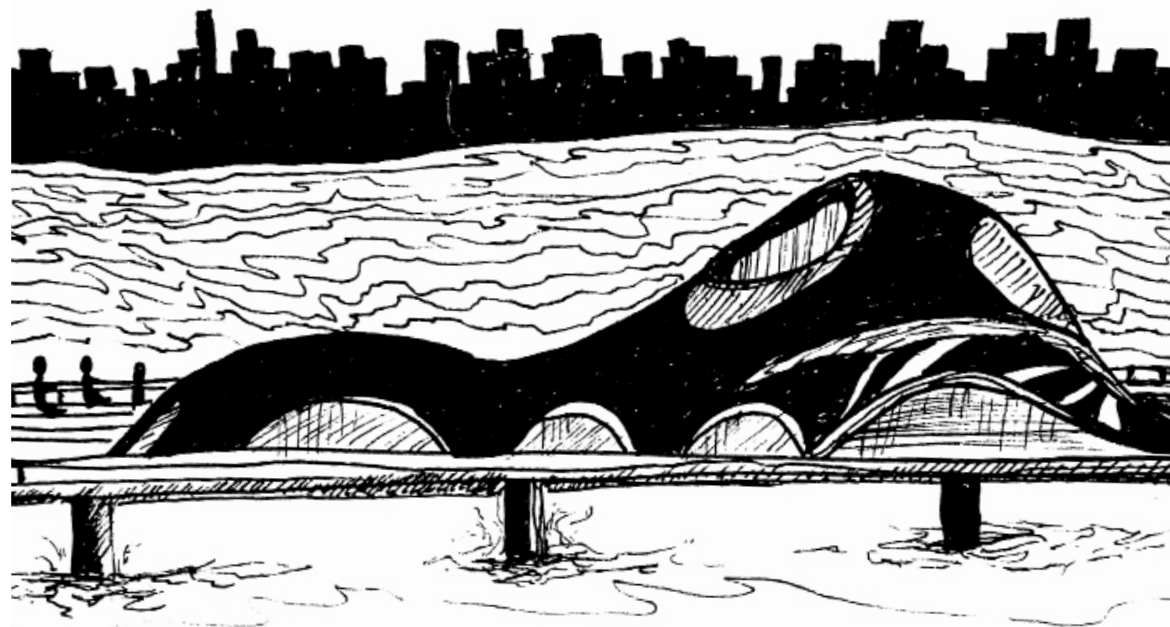
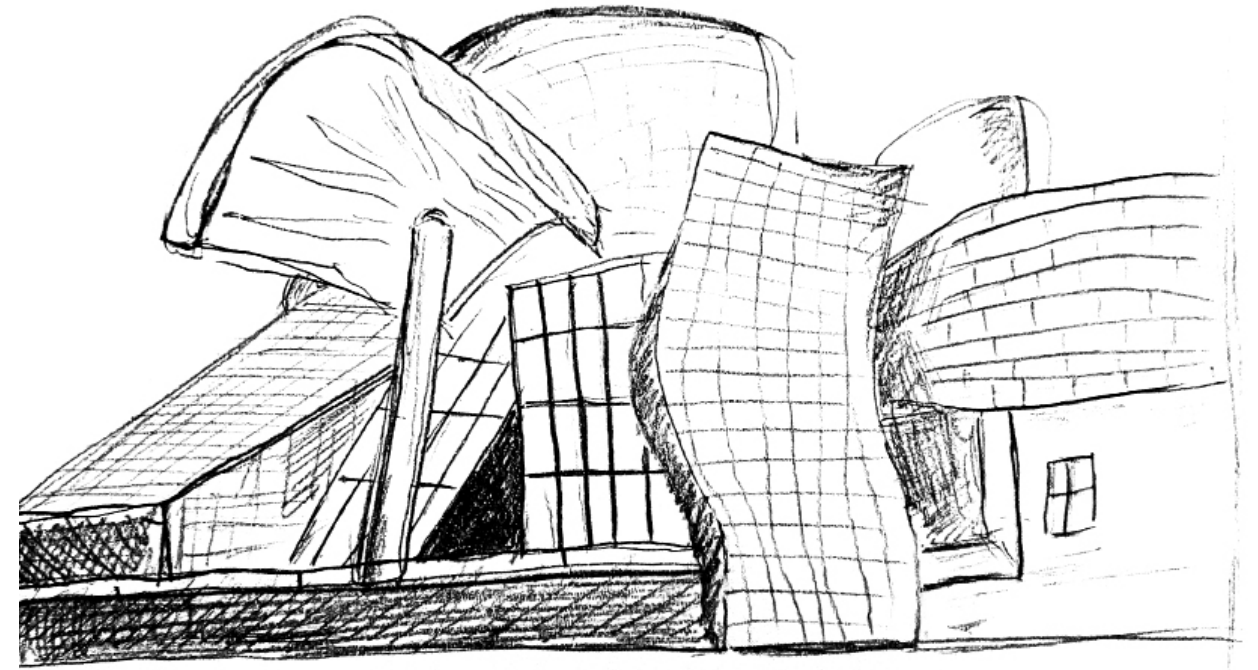
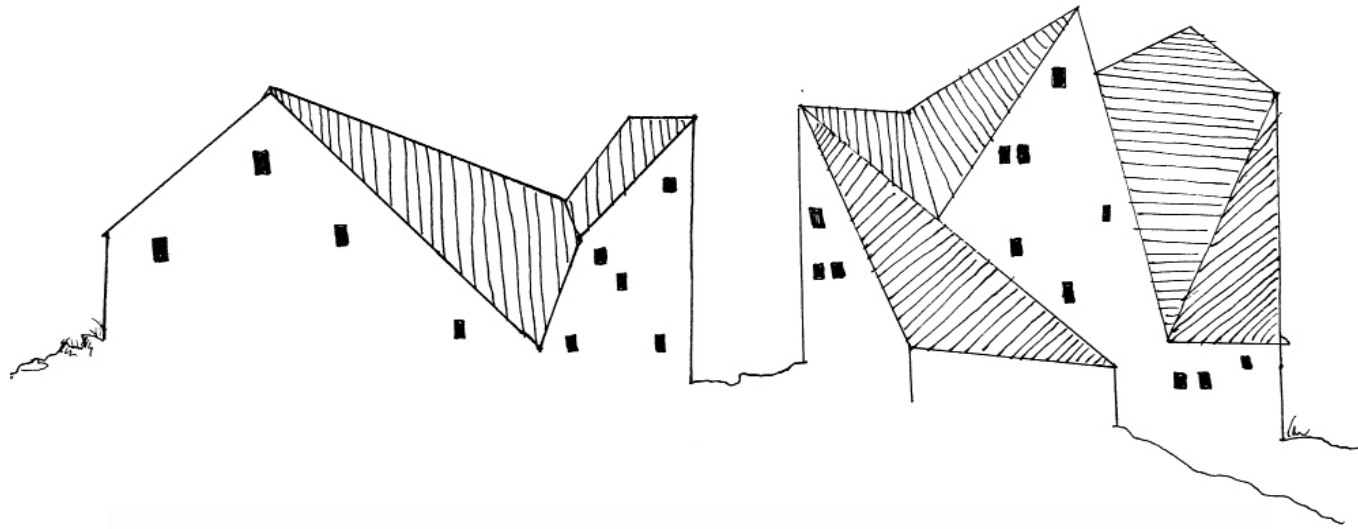


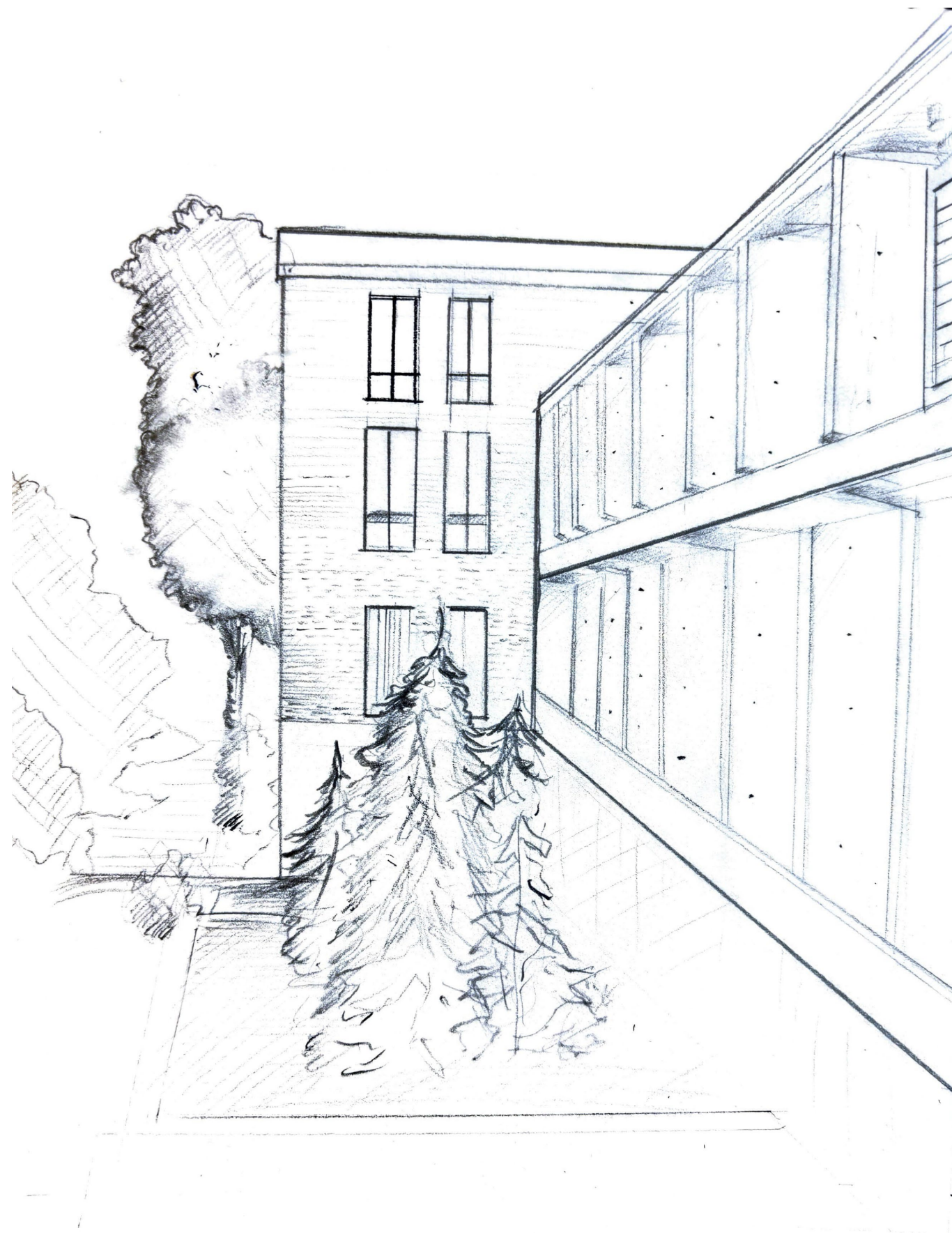
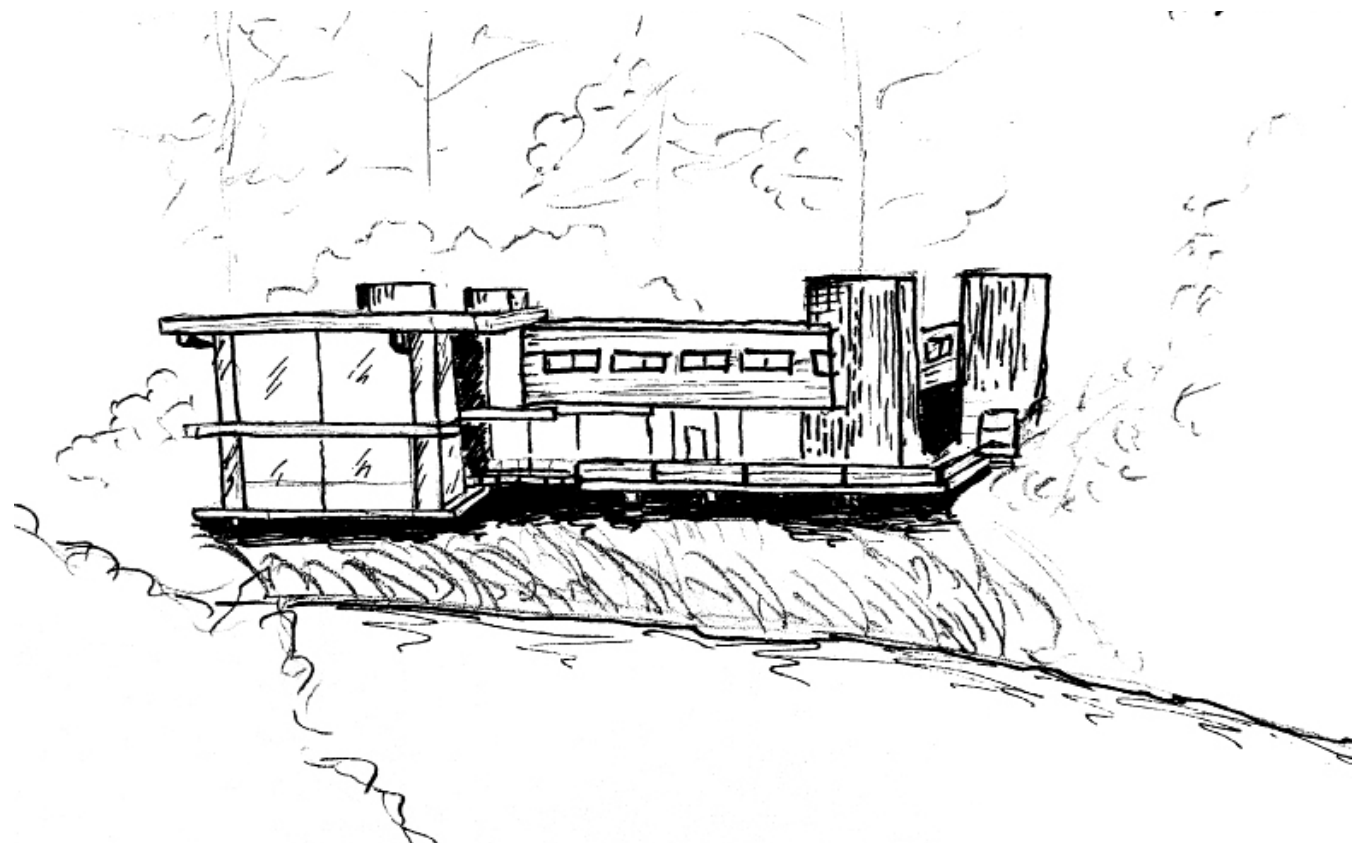
South Section

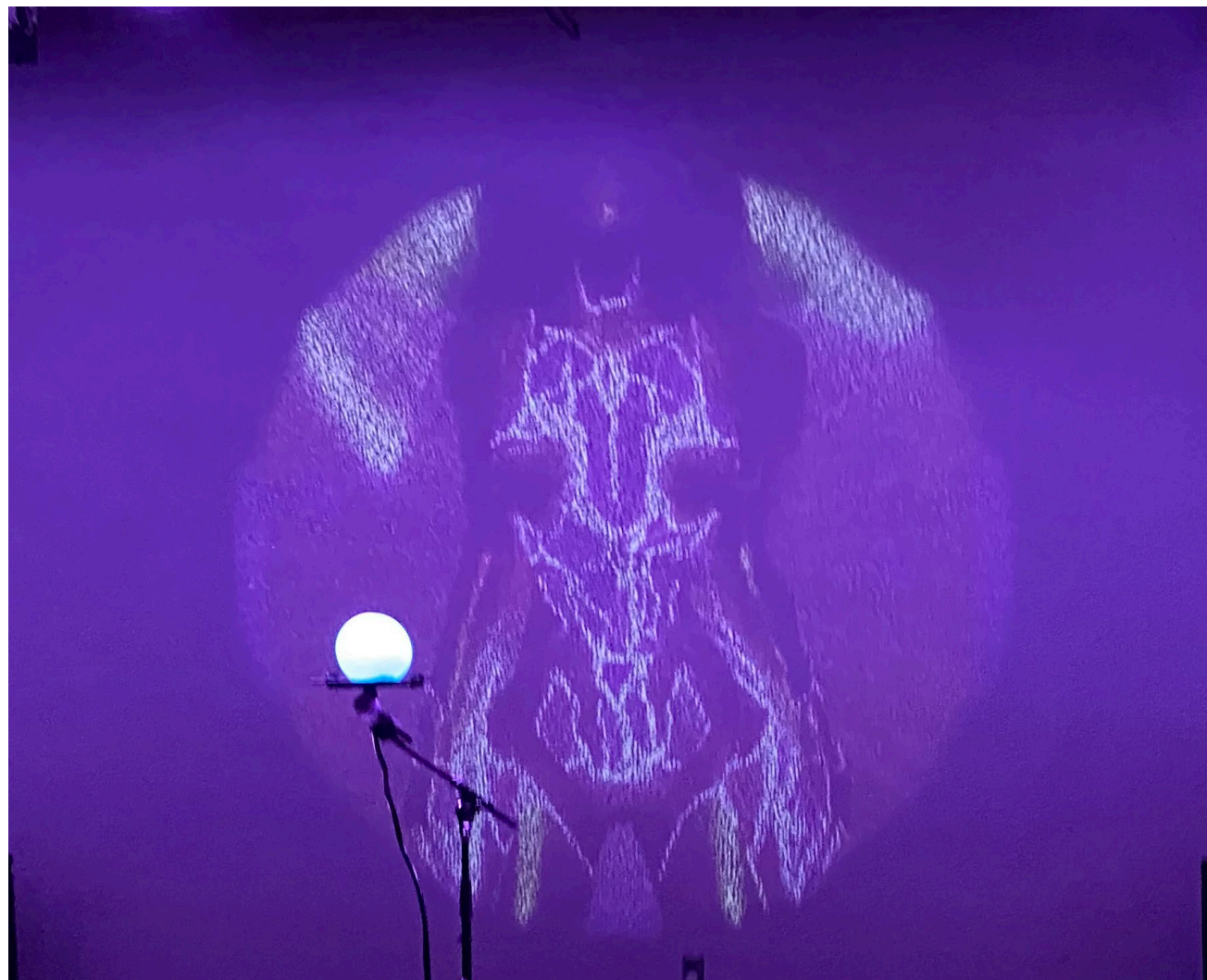


East Section

SKETCHES





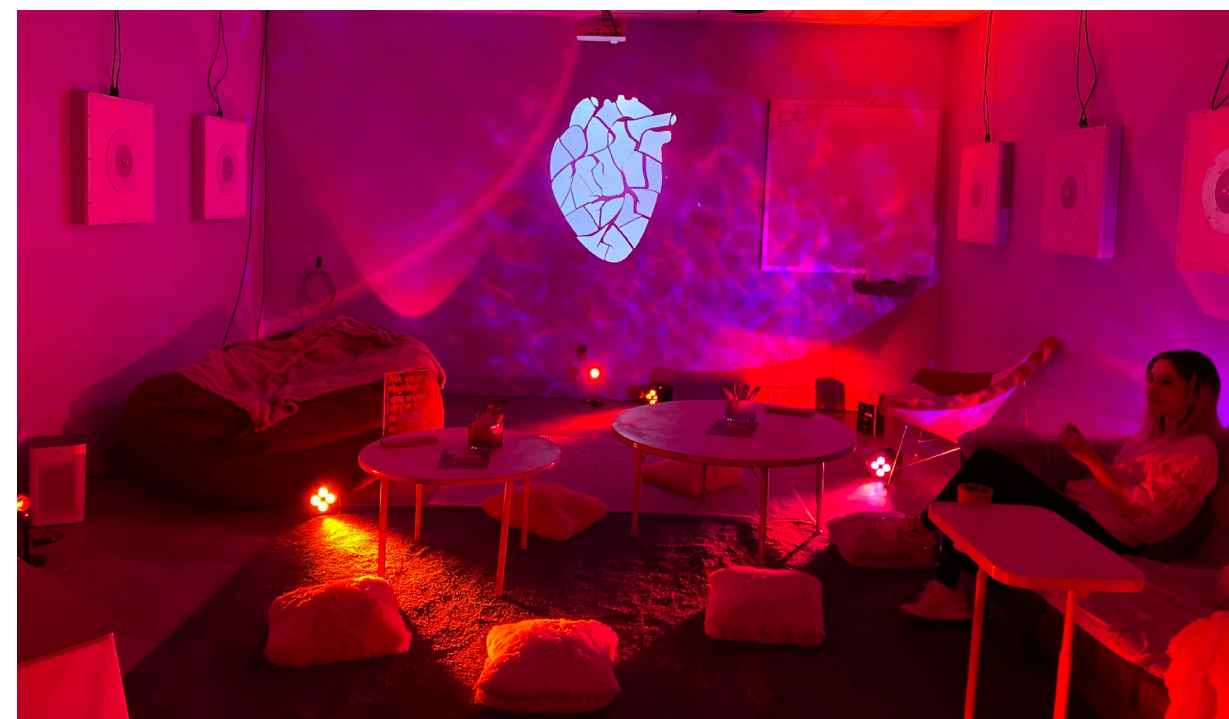
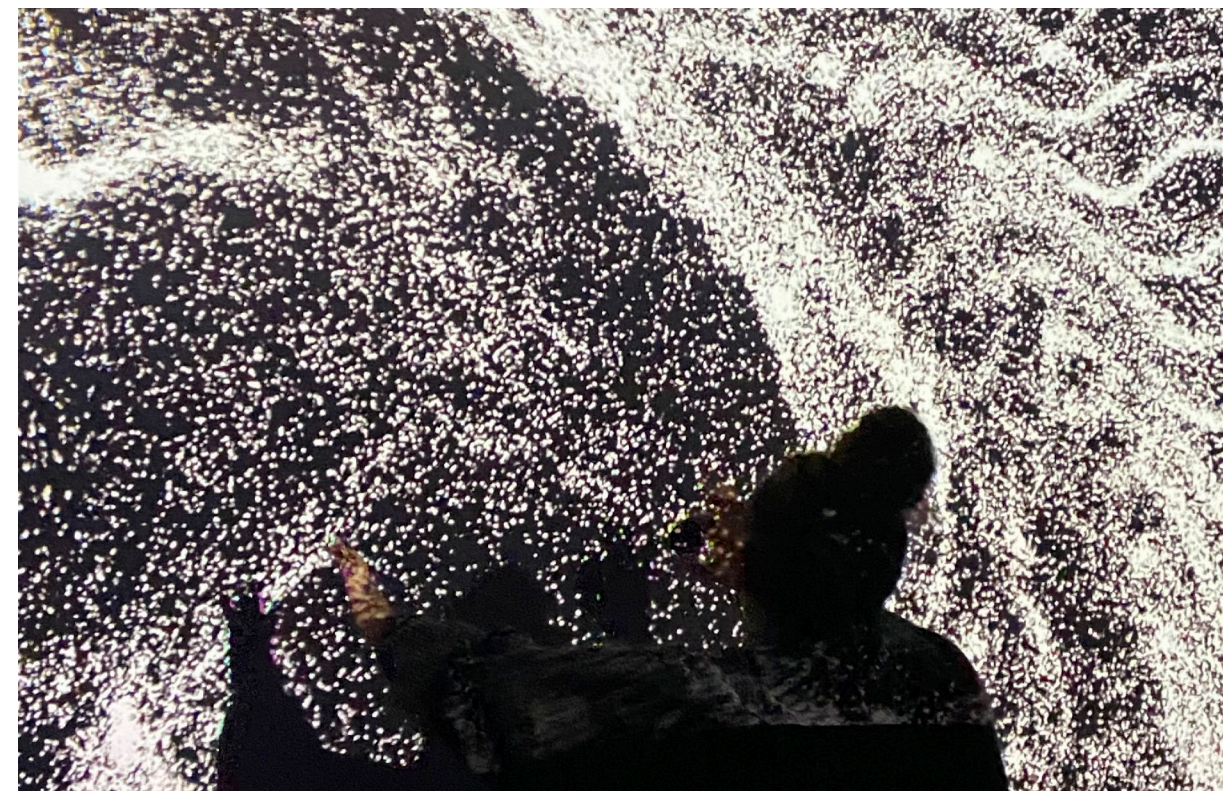


THE IN BETWEEN

IMMERESIVE ART INSTALLATION

The In Between is an hour-long immersive exhibit that blends storytelling, technology, and sensory design. It invites audiences to explore a mysterious realm between life and death as they make their way through the experience.

The production featured interactive light and sound, a live actor, dual TouchDesigner walls, an 8-minute VR experience, AR interactions, and a fully built physical set. As part of the development team, I led the implementation of VR, TouchDesigner, and AR elements. I also contributed to world-building, scriptwriting, and helped build and wire the physical set. The In Between was shortlisted for the 2023 YUGO BAFTA Award.



Samuel Brunson Hewitt
512-988-8528 | samhewitt@utexas.edu | <https://www.linkedin.com/in/sambhewitt>

EDUCATION

The University of Texas, Austin TX
September 2020 - May 2023
B.A. Philosophy, Immersive Design

EXPERIENCE

Fergus Garber Architects, Palo Alto CA — Intern
September 2023 — Present

- Modeled projects in ArchiCAD, Sketched line drawings for submittals and construction documents
- Designed and formatted submittal documents, communicating across various channels
- Edited photos and conducted marketing work, designed, and produced the company holiday card

Routledge Companion to Remix Studies Second Edition — Author
September 2023 — May 2024

- Drafted and co-authored a book chapter about the influence of generative AI on remix culture and the creative economy
- Conducted research, managed schedule, organization, task tracking and task allocation
- Conducted research and outreach for Interviews

Arc'teryx, Palo Alto CA — Product Guide
September 2023 – February 2024

Texas Immersive Institute, Austin Texas — Experience Designer
October 2022 – March 2023

- Conducted research for various projects, collaborated with teams ranging from 4 to 30
- Produced two ticketed conferences for industry leaders
- Ideated and designed projects for clients

Global Disinformation Lab, Austin Texas — Researcher

January 2022 – June 2022

- Communicated with team of 8 over various channels to produce research writeups
- Collaborated on blog posts to raise awareness about the lab's research
- Researched methodologies and managed scope and purpose of project with team members
- Built codebook of existing policy on misinformation and disinformation for companies and organizations to access

Texas Orator, Austin Texas — Writer
October 2021 – March 2023

- Researched relevant issues and drafted long-form editorial style articles
- Communicated with editors and implemented revisions
- Effectively organized time and met deadlines
- Successfully published articles using WordPress

Ex Nihilo, Austin Texas — Editor
January 2022 – June 2022

- Edited the University's undergraduate philosophy magazine based on standard criteria
- Communicated with authors making suggestions and revisions

Crux Climbing Center, Austin Texas — Rock Climbing Coach & Front Desk
November 2021 – May 2023

- Coached 50-member competitive youth climbing team with 11 reaching State and designed the training curriculum